

# 11 Eastmore Place, Maroubra, NSW 2035



## Sold House

Friday, 3 November 2023

11 Eastmore Place, Maroubra, NSW 2035

Bedrooms: 4

Bathrooms: 2

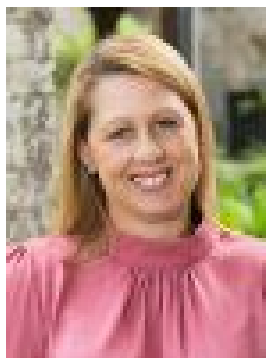
Parkings: 2

Area: 280 m2

Type: House



Eitan Rubinstein  
0229370770



Melissa McCormack  
0293707700

## Contact agent

Drenched in natural light, this stunning home unveils a generous layout across two levels and represents the perfect home for young and growing families. Offering superb street appeal and renovated interiors throughout, it is set in a quiet street, only steps to Snape Park and a choice of quality schools, Mount Sinai College, Maroubra Junction Primary and the International French School.- Two level oversized semi-detached home on 280 sqm block with wide frontage- High grade renovation enhanced by ultra-modern design and excellent use of skylights- Spacious living room with timber floorboards, dedicated study, under house storage- Gourmet open plan kitchen with island bench and sliding doors to the outdoors- Covered entertaining deck and private rear garden and level lawn- Two huge stylish bathrooms, main with double vanity, bath and shower- High ceilings, plantation shutters, ceiling fans, ducted air-conditioning, laundry facilities- Long side driveway with off-street parking for 2 cars, garden storage shed- Minutes to Westfield Eastgardens and Pacific Square shopping and eateries- Fantastic location in a quiet family friendly neighbourhood