

# 11 Grevillea Crescent, Greystanes, NSW 2145



## House For Sale

Wednesday, 3 April 2024

11 Grevillea Crescent, Greystanes, NSW 2145

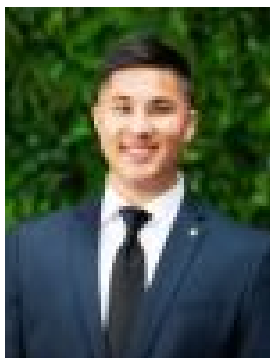
Bedrooms: 5

Bathrooms: 3

Parkings: 4

Area: 999 m2

Type: House



Jaiden Spencer

0432337277

## Auction

Introducing an exquisite abode that will surely captivate your senses. Nestled in a breathtakingly scenic setting, this remarkable residence graces a sprawling 999sqm (approx.) parcel of land. With an abundance of entertainment areas, it is an idyllic haven for a growing family, astute renovators, and visionary developers alike. This dwelling is a manifestation of dreams, offering an opportunity to craft a personal sanctuary that surpasses all expectations. As soon as you step foot into this lavish abode, you are welcomed by a captivating, sun-drenched interior. The expansive kitchen steals the spotlight with its stainless-steel appliances, six-burner gas cooktop, ample cupboard space, and tiled splash backs. The open-concept living and dining areas, complete with ducted air conditioning throughout the residence, epitomize the sheer grandeur of this home. The bedrooms are generously sized and elegantly tiled, boasting built-in wardrobes in each and a master bedroom that includes a fireplace, walk-in robe, and floor-to-ceiling tiled ensuite. Stepping into the backyard feels like entering an oasis, with the shimmering blue waters of the saltwater in-ground pool. The vast outdoor alfresco space is an ideal spot for entertaining and hosting gatherings for both friends and family. Added conveniences include a double lock-up automatic garage and additional storage space. I can't wait to hand you the keys to 11 Grevillea Crescent, Greystanes.

**Property Features:** 999sqm Approx parcel of land Expansive open-plan living and dining area 4 generously sized bedrooms with custom built-in wardrobes Luxurious master suite featuring a walk-in robe, cozy fireplace, and private ensuite Gourmet kitchen equipped with top-of-the-line stainless steel appliances, a 6-burner gas cooktop, and a double sink Grand main bathroom boasting a spa bath and a separate shower Centrally air-conditioned and elegantly tiled throughout Vast outdoor alfresco space perfect for entertaining guests Sparkling saltwater pool for relaxation and leisure Convenient internal laundry with an additional toilet Secure double lock-up garage with automatic doors Eco-friendly with 48x 10.5KW solar panels for sustainable living.

**Handy Amenities:** Widemere public school Holroyd high school Childcare centres Greystanes shopping village Frequent bus transport Alpha Road Park

**ONLINE enquiry policy**  
-All email & online enquiries received from this website will not be attended to if a number & email address are not provided. All information contained herein is gathered from sources we deem to be reliable. However, we cannot guarantee its accuracy and interested persons should rely on their own enquiries.

**Disclaimer:** The information presented has been furnished from sources we deem to be reliable. We have not verified whether or not the information is accurate and do not accept any responsibility to any person and do no more than pass it on. All interested parties should rely on their own enquiries in order to determine the accuracy of this information.