

**11 Hambledon Road, Hawthorn, Vic 3122**

**House For Rent**

Wednesday, 12 June 2024



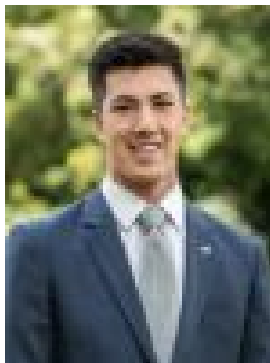
**11 Hambledon Road, Hawthorn, Vic 3122**

**Bedrooms: 3**

**Bathrooms: 2**

**Parkings: 3**

**Type: House**



Oscar Sturm  
0429125154

**\$1,100 per week**

Nestled in the heart of one of Melbourne's most sought-after suburbs, this charming residence offers comfort, convenience, and style. Property Features:- Situated in the picturesque neighbourhood of Hawthorn, known for its leafy streets and vibrant community atmosphere.- Three spacious bedrooms, each providing ample space and natural light for relaxation and rest.- Two modern bathrooms, including a master ensuite, equipped with contemporary fixtures and fittings.- A well-appointed kitchen featuring quality appliances, ample storage, and a convenient layout for culinary enthusiasts.- Generous living and dining areas, perfect for entertaining guests or enjoying cozy nights in with loved ones.- A private courtyard offering a serene retreat for outdoor dining, gardening, or simply soaking up the sunshine.- Secure off-street parking available for residents' convenience. Additional Amenities:- Ducted heating and split-system air conditioning ensure year-round comfort in all seasons.- Abundant storage options throughout the property, including built-in robes and additional storage space.- Close proximity to public transport options including trains, trams, and buses for easy access to the CBD and surrounding areas. (less than 1km)- An array of cafes, restaurants, boutiques, and supermarkets nearby, offering a diverse range of culinary delights and shopping experiences on Riversdale & Glenferrie Road (less than 500m)- Parks, reserves, and recreational facilities within walking distance, providing opportunities for leisure and outdoor activities. (less than 500m)- NBN connection perfect for working from home\*To register to inspect please click "Virtual Tour" or "Book Inspection" so we can keep you informed of inspection times and changes. \*Photo ID may be required at open for inspections.