

11 Honeysuckle Drive, Annandale, Qld 4814

House For Sale

Thursday, 16 May 2024



11 Honeysuckle Drive, Annandale, Qld 4814

Bedrooms: 3

Bathrooms: 1

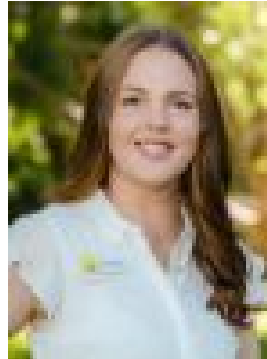
Parkings: 2

Area: 634 m2

Type: House



Giovanni Spinella
0406664191



Jaimee Rankin
0498656483

Offers Over \$449,000

Introducing 11 Honeysuckle Drive, Annandale, a charming property that offers comfortable living in a highly sought-after location. With two separate living areas on a generous 634SQM block, this home provides ample space for starting families and first home buyers alike. One of the standout features of this property is the brand-new kitchen, which has been thoughtfully designed with sleek countertops, ample storage space, and high-quality appliances. The new and stylish flooring throughout the home adds a touch of elegance, while the fresh coat of paint inside and out gives the home a clean and inviting feel. Step outside and you'll find a lovely patio area, perfect for entertaining guests or enjoying a quiet morning. Families will appreciate the proximity to both primary and secondary schools, providing convenience for parents and a quality education for children. James Cook University is also nearby, making it an excellent choice for students or academics. For those who enjoy an active lifestyle, the Murray Sporting Complex offers a range of recreational activities just a stone's throw away. Lavarack Barracks, Fairfield Shopping Centre, and the Townsville Hospital are all conveniently located in the vicinity, ensuring that daily errands and amenities are within easy reach. Don't miss the chance to make this house, your home! *Property Description/Write-Up is Copyright of Team Giovanni at Ray White Townsville. Disclaimer: Ray White Townsville has prepared this information using every endeavour to ensure that the information given is true and accurate but accepts no responsibility or liability in respect of any errors, omissions or inaccuracies that may occur. All prospective purchasers should endeavour to make their own enquiries to verify the accuracy of the information provided.