

11 Houghton Drive, Ferntree Gully, Vic 3156



Townhouse For Sale

Friday, 22 March 2024

11 Houghton Drive, Ferntree Gully, Vic 3156

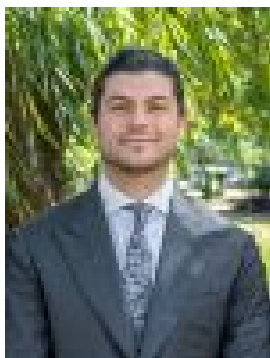
Bedrooms: 3

Bathrooms: 2

Parkings: 2

Area: 165 m2

Type: Townhouse



Rene Mawad
0403141596



Cat Schwind
0401011314

Auction (\$630,000 - \$690,000)

THE PROPERTY Nestled in a peaceful cul-de-sac this immaculate three-bedroom townhouse is ready to simply move in and enjoy. Spread over two light-filled levels, this easy-to-manage haven boasts a spacious lounge and dining zone upon entry, highlighted by plush carpet underfoot, contemporary colours and sliding door access to the front verandah and gardens. Flowing through to the centrally located kitchen, gourmets will appreciate the premium new appliances and large pantry, while the tranquil family room at the rear offers easy access to the sun-splashed deck and private, low-maintenance courtyard. A sweeping staircase takes you to three first floor bedrooms, the generously sized main flaunting walk-in robe, sparkling ensuite and a serene balcony, with two further robed bedrooms serviced by the family bathroom. Ideal for young families, first home buyers, downsizers and investors alike, this impressive home is a must see.

THE FEATURES • Immaculate three-bedroom, two-bathroom townhouse • Luxe main bedroom boasts WIR, ensuite & balcony • Two further bedrooms include built-in robe storage • Family bathroom with shower, bath, vanity & separate toilet • Sun-splashed deck & courtyard, perfect for entertaining • Remote double garage with direct access to the rear yard • Ducted heating & split system cooling for all-seasons comfort

THE LOCATION Ideally situated close to Mountain Gate shops and cafés, as well as Knox Park and Waterford Valley Golf Course, a short walk to Kent Park and Knox Park primary schools, and within easy reach of Westfield Knox and Eastlink.

On Site Auction Thursday 11th of April at 6:30pm