

11 Jersey Road, Emerton, NSW 2770

Laing+Simmons

House For Sale

Thursday, 14 March 2024

11 Jersey Road, Emerton, NSW 2770

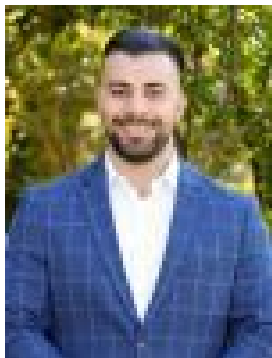
Bedrooms: 3

Bathrooms: 1

Parkings: 1

Area: 676 m2

Type: House



Ali Awad

0296755566

JUST LISTED | PRIME LOCATION!

Well-presented, streamlined and comfortable, this three-bedroom home reveals a desirable north-to-rear aspect and is located on a 676.6m corner block. Ensuring a high-growth and lucrative prospect within Emerton, the property holds the potential for a granny flat and the chance of subdivision (STCA). Conveniently located for everyday ease, the property is just a mere 500m from Emerton village shops, Woolworths and Charlie Lowles Leisure Centre. - Impressive 676.6m corner block welcomes a desirable north-to-rear aspect- Lucrative opportunity with scope to add a granny flat or subdivide (STCA)- Extensive front verandah leads to the open plan lounge and dining space- Interiors enjoy breezy cross-flow ventilation, seamless flow to the pergola- Elevated entertainers' pergola oversees the established, park-like backyard- Tidy kitchen is equipped with a brand new cooktop and cupboard space- Three good-sized bedrooms, master bed is fitted with a built-in wardrobe - Air-conditioning, ceiling fans, solar panels, timber floors, internal laundry- Single garage, plenty of space available for off-street parking and storage- Walk to transport/buses, Popondetta Park, Emerton Youth Recreation Centre