

11 Maria Street, Allansford, Vic 3277



Sold Residential Land

Saturday, 9 December 2023

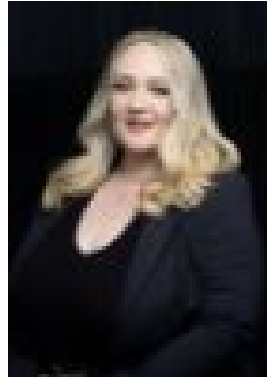
11 Maria Street, Allansford, Vic 3277

Area: 443 m2

Type: Residential Land



Tessa Stephens
0400680566



Monique Brooks
0402740802

Contact agent

In what is a tight knit, tightly held community, the opportunity to buy, let alone build are few and far between. On a 443sqm corner allotment, a short walk to the local primary school and the Hopkins River at your back doorstep. The local bakery, recreation reserve, pub and restaurant all nearby for convenience. Township Bronte zoned with no easements and all services available at the site. Enquire today.