

11 Murray Drive, Point Leo, VIC, 3916

Sold House

Wednesday, 21 June 2023

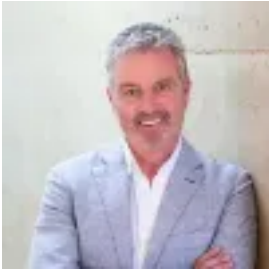
11 Murray Drive, Point Leo, VIC, 3916

Bedrooms: 4

Bathrooms: 2

Parkings: 2

Type: House



Rob Curtain



John Vains

'TINTINARA' Exclusive Oceanside Opportunity Steps from the Sand

Hidden away within a tightly-held oceanside enclave, this generous 1,052sqm (approx.) property is a truly unique and rare opportunity to claim a significant holding on the edge of Point Leo's famous beaches.

Built in the 1970s and held by the same family, this solid-brick family home has stood the test of time, providing a spacious dual-level floor-plan fit for a contemporary revival or investment. With the perfect flat parcel of land, it also has exceptional scope for an architectural masterpiece to take its place (STCA).

Currently, two large living areas and four bedrooms take full advantage of the verdant outlooks, inspiring a peaceful existence, with a functional classic kitchen, split system heating/AC and two bathrooms over two levels, the allotment is private and versatile, offering a sun-drenched north-east orientation.

Just footsteps away from beach access tracks, a short walk to the General Store/cafe, and moments from world-class wineries, including Point Leo Estate, artisan villages and farm gates; there's nowhere else you'd rather be.

Proudly marketed by the team at Peninsula Sotheby's International Realty.