

11 Newman Drive, Footscray, Vic 3011



Sold Townhouse

Wednesday, 17 January 2024

11 Newman Drive, Footscray, Vic 3011

Bedrooms: 2

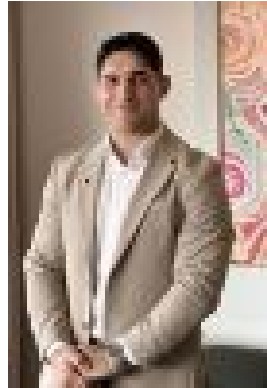
Bathrooms: 1

Parkings: 1

Type: Townhouse



Joseph Luppino
0383987800



Max Marcialis
0422649411

\$740,000

Offering easy modern living and superb outdoor entertaining, this immaculately presented two-bedroom, double-story townhouse is contained within the Olympic Tyres office building – one of the Inner West's most significant historic landmarks. Soaring ceilings and light-filled interiors spill out to an excellent entertaining courtyard and north-facing balcony for effortless alfresco living, while walking distance proximity to cafes and eateries promises an excellent city-fringe lifestyle.— perfect for home buyers and investors alike— light-filled open-plan living — well-appointed kitchen/meals with quality Blanco and Westinghouse appliances and plenty of storage— two bedrooms with built-in robes and balcony access including a large master with study nook— modern bathroom with European laundry — soaring ceilings and an abundance of natural light — quality floor treatments throughout, including stunning hardwood floorboards— split-system heating and cooling + double-glazed windows— sunny north-facing covered courtyard with rear access and a garden shed + north-facing balcony — allocated parking for one car— a fantastic city-fringe lifestyle awaits in the fabulous location! Walk to Barkly Village in less than ten minutes to explore its great selection of shops, cafes, and eateries, and enjoy the convenience of IGA just a six-minute stroll from home. Seddon Village is also an easy walk away, while proximity to Footscray and Yarraville places the best of the Inner West at your fingertips. Walk to Footscray West Primary School and Footscray High School's Barkly campus and enjoy moments-from-home access to Victoria University— only 7km from the CBD with easy road access and regular citybound trains from West Footscray Station, a six-minute walk from home