

11 Oxbow Street, Mickleham, Vic 3064



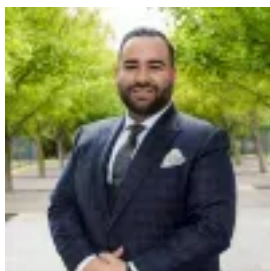
Sold Residential Land

Wednesday, 29 November 2023

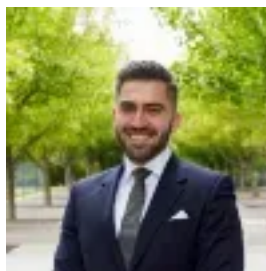
11 Oxbow Street, Mickleham, Vic 3064

Area: 480 m2

Type: Residential Land



Adrian Prestileo
0393082277



Vito Trentadue
0393082277

\$405,000

Surrounded by stylish modern homes, this vacant allotment offers an exciting opportunity to unleash your creativity and construct a brand-new residential masterpiece in a thriving Annadale neighbourhood. The total land area of this block spans 480 square metres (approx), plus it has uniform dimensions and minimal gradient across the site so planning and building your dream home will be a breeze. Key to the area's popularity is the convenient lifestyle on offer with key amenities and attractions all close by, as well as easy access to Merrifield City Shopping Centre and the Hume Freeway. A short stroll to the bus stop on Ellscott Boulevard, you've also got Annadale Park Playground for the kids to enjoy and the serenity of Grassland Nature Reserve around the corner. There's a selection of kinder/childcare facilities to choose from as well as popular schools including Gaayip-Nagila Primary School, Holy Cross Primary School, Darul Ulum College and Mickleham Secondary College. So, don't miss out on this one. Once it's gone, it's gone.