

11 Pandorea Way, Valentine, NSW 2280

House For Sale

Saturday, 25 November 2023

11 Pandorea Way, Valentine, NSW 2280

Bedrooms: 5

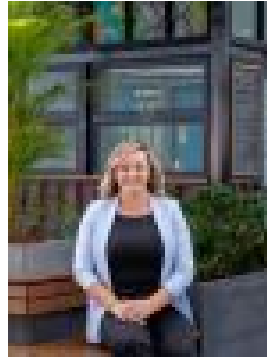
Bathrooms: 3

Parkings: 2

Type: House



Peter Shiels
0422479552



Natalie Francis
0423606510

Contact Agent

This residence goes far beyond its picturesque facade, inviting you to step into a thoughtfully designed haven that seamlessly blends style and practicality. As you move through, the home opens up to a generously spacious interior, seamlessly blending open-plan living and dining areas that converge around a well-appointed contemporary kitchen. This central hub effortlessly extends to the rear, revealing an alfresco hosting zone framed by mature plants and impeccable landscaping that envelops a stunning pool, creating an idyllic space for both relaxation and entertainment. Beyond the surface allure, this property is a testament to the harmonious fusion of aesthetic elegance and functional design. The thoughtful layout and attention to detail throughout 11 Pandorea Way redefines the concept of modern living, offering a residence where every space serves a purpose while maintaining an unmistakable sense of sophistication.

Property Highlights:

- Flat corner block of approx. 590 m²
- Multiple access points
- Open-plan living, providing a light and airy feeling throughout
- Dining, kitchen, and living all step out to a tropical oasis where entertaining is made easy
- Sleek white kitchen with black accents, stone bench top, and backsplash that overlooks the backyard
- Fisher and Paykel five burner gas cooktop and electric oven
- Ducted air conditioning throughout
- 5 bedrooms with large robes and ceiling fans plus a separate study
- Master bedroom boasts a WIR and private ensuite with floor-to-ceiling tiles and a double basin
- Main bathroom boasts floor-to-ceiling tiles, double basin, bath, shower, and separate w/c
- Aluminum plantation shutters
- Multiple storage areas throughout
- Multiple undercover entertaining areas with outdoor kitchenette
- In-ground sparkling blue pool
- Double car garage with house access
- Well-maintained, low-maintenance lawns and gardens
- 24 Solar panels
- Fully fenced backyard
- Zoned for the sort-after Valentine Public School and Belmont High Schools
- A short 3.5 km to the general buzz of Belmont Citi Centre where cafes, boutique shopping are located
- A short 7.2 km to the general buzz of Warners Esplanade where cafes, boutique shopping, and everyday needs are met