

11 Parish Street, Marsden Park, NSW 2765

House For Sale

Friday, 24 May 2024

11 Parish Street, Marsden Park, NSW 2765

Bedrooms: 2

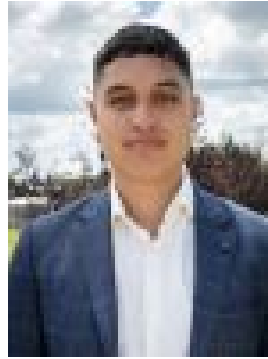
Bathrooms: 1

Parkings: 1

Type: House



Theesan Pather
0283157794



Pera Tutua-Nathan
0283157794

\$799,000 - \$829,000

Theesan Pather & Urban Real Estate Marsden Park are proud to present this sun bathed 2 bedroom terrace right at the epicentre of the estate on Parish Street in Elara. Originally constructed by MJH Multi A subsidiary of McDonald Jones Homes, This cosy 2 bedroom terrace is just over 5 years old and still presents brand new. The vendor here a first home buyer has cherished her time here and enjoyed the convenience of the Azure terrace right opposite the shopping centre but has now moved interstate so this presents a picture perfect opportunity for another family of 1st home buyer to get hold of a beautifully cared for property sitting 1 turn off Elara Blvd directly opposite Elara Village. With close access to Bus stops, Parks, Shops & St Lukes K-12 you cannot go past 11 Parish as the perfect entry level option into one of Sydneys most popular new growth areas, Elara Marsden Park. To book an inspection contact Theesan on 0422 580 577 and let's discuss a strategy to get you in to this property. - West Facing- Opposite Shopping Centre- High ceilings- Downlights throughout- Full Ducted AC- 20mm ceaser stone- Mirror splash- Double under mount sinks- Custom pantry extension- 600mm gas cooktop- Built-in in robes all roomsDisclaimer:All information contained herein is gathered from sources we deem to be reliable. However, we cannot guarantee its accuracy, and interested persons should rely on their own enquiries. Images & Furnishing are for illustrative purposes only and do not represent the final product or finishes. For inclusions refer to the inclusions in the contract of sale. Areas are approximate.All parties are advised to seek full independent legal and professional advice and investigations prior to any action or decision.