

11 Pattomkate Grove, Mernda, Vic 3754



Sold House

Friday, 24 May 2024

11 Pattomkate Grove, Mernda, Vic 3754

Bedrooms: 3

Bathrooms: 2

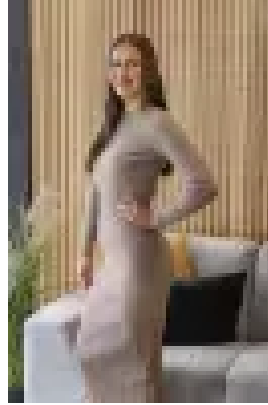
Parkings: 1

Area: 376 m2

Type: House



Ashlee Jade
0397175372



Imogen Hammond
0391111707

\$685,000

Tranquilly located and surrounded by quality homes and within easy walking distance to beautiful parklands and close vicinity to reputable schools including Gilson College Mernda and St Joseph's Catholic Primary School, childcare options, bus stops, Mernda Train Station, Mernda Regent Street Medical and nearby to Mernda Junction and Mernda Town Centre. Showcasing three bedrooms all with built in robes plus walk-in robe and ensuite to the master bedroom, well-appointed kitchen boasting ample cabinetry, quality appliances including dishwasher and adjacent spacious meals/family area. Venture outdoors to a pergola, ideal for all year round entertaining along with low maintenance gardens. Blessed with an abundance of extra features including, ducted heating and evaporative cooling, formal lounge upon entry, central bathroom, oversized remote single garage with external access, alarm system, striking timber flooring, sizeable laundry, extensive downlights and so much more. This home will appeal to first home buyers, investors, and downsizers. -Inspection is not to be missed!!