

**11 Pellitt Lane, Dural, NSW 2158**

MANOR

**Acreage For Sale**

Saturday, 27 April 2024

11 Pellitt Lane, Dural, NSW 2158

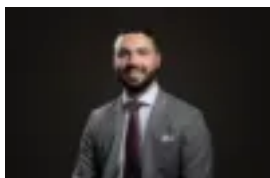
**Bedrooms: 5**

**Bathrooms: 4**

**Parkings: 5**

**Area: 2 m2**

**Type: Acreage**



**WILLIAM BRUSH**

0407696022

## New to Market

Discover an unparalleled retreat nestled just moments from Round Corner Village. Beyond the secure gated entry lies a sprawling 2.12-hectare estate boasting a blend of charm and contemporary luxury. Tranquil gardens and a serene bush backdrop set the scene for this idyllic sanctuary. From the grandeur of the marble foyer, the home unfolds into a series of meticulously designed living spaces. The sophisticated formal lounge is perfect for intimate gatherings, while an expansive open-plan family and meals area offers panoramic views of the lush surrounds. Entertain with ease in the state-of-the-art kitchen, featuring stone benchtops and five appliances. Glass bi-fold doors seamlessly connect the indoor and outdoor living areas, where a sprawling alfresco deck overlooks the heated salt swimming pool, surrounded by manicured lawns and mature gardens. Retreat to the master suite, complete with floor-to-ceiling windows framing breathtaking vistas, a lavish ensuite bathroom with a freestanding tub, and a private landscaped courtyard with an outdoor shower. Additional bedrooms, each with ensuite access and walk-in wardrobes, offer comfort and privacy for family and guests alike. This property boasts a host of amenities including a bespoke home theatre, a billiards room with a built-in wet bar, and a floodlit championship sized tennis court. Smart home technology, security features, and meticulous attention to detail ensure convenience, comfort, and peace of mind. Conveniently located, this exclusive estate offers the perfect balance of seclusion and accessibility. Enjoy leisurely strolls to nearby shops, restaurants, and cafes.