

11 Pepperell Avenue, Glen Waverley, Vic 3150

House For Sale

Thursday, 9 November 2023



11 Pepperell Avenue, Glen Waverley, Vic 3150

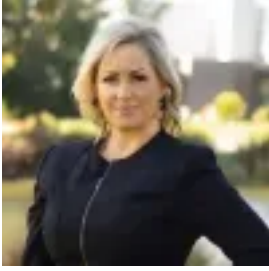
Bedrooms: 3

Bathrooms: 1

Parkings: 1

Area: 705 m2

Type: House



Belinda Van Suylen
0395669852



Danny Zhang
0433906203

AUCTION THIS SATURDAY AT 1PM

Underscored by its brilliant location in the coveted Glen Waverley Secondary Catchment (STSA), this classic home provides the perfect foundation for a luxury new home or multi-dwelling project on a rectangular 705sqm approx. allotment (STCA). Set beneath high ceilings, the home's accommodation encompasses two robed bedrooms, recreation room/3rd bedroom, family bathroom, separate toilet and a laundry. The central kitchen connects through to the lounge and dining room boasting a gas log fire and direct access onto the rear patio and big backyard, while extra appointments include split system heating/air conditioning plus a lock-up carport. Set in a location that's hard to beat, only a short stroll from the heart of Glen Waverley where you'll find The Glen Shopping Centre, Kingsway restaurants, buses and trains. Near Syndal South Primary, Glen Waverley Secondary, Wesley College, Huntingtower School and tranquil parkland. Photo ID required at all open for inspections.