

11 Pickworth Drive, Mill Park, Vic 3082



Sold House

Friday, 15 March 2024

11 Pickworth Drive, Mill Park, Vic 3082

Bedrooms: 3

Bathrooms: 2

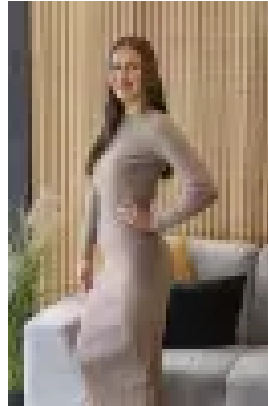
Parkings: 2

Area: 604 m2

Type: House



Jay Moxon
0391111707



Imogen Hammond
0391111707

\$775,000

Perfectly positioned in a sought after Mill Park location and within easy access to RMIT University, Plenty Road Trams, DFO Uni Hill, Stables and Westfield Shopping Centre's, reputable schools and gorgeous parklands, this stunning home is sure to appeal to all first home buyers, investors and families. Showcasing 3 spacious bedrooms with an ensuite and walk-in robe to the master, renovated central bathroom, large lounge upon entry featuring cathedral ceilings, striking central kitchen boasting ample cabinetry and bench space, dishwasher, adjacent meal/family area plus much more. Journey outside to a superb alfresco area suitable for all-year round occasions along with a generous rear yard perfect for the kids and pets to play. Extra features include the comforts of evaporative cooling and ducted heating, striking flooring, NBN, quality landscaped gardens, immaculate presentation throughout, double garage with rear access to the yard plus further secure off-street parking. Inspection will excite - enquire today!