

11 Pleasant Place, Wishart, Qld 4122

House For Rent

Tuesday, 28 May 2024



11 Pleasant Place, Wishart, Qld 4122

Bedrooms: 5

Bathrooms: 3

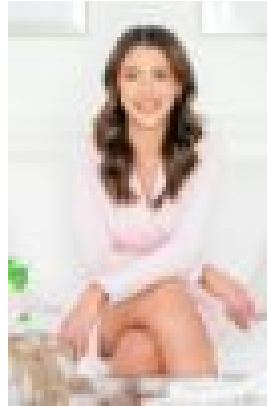
Parkings: 3

Area: 626 m2

Type: House



Karen Herbert
0733473737



Madeline Walsh
0733473737

\$1,100 | 5 beds | 3 bathrooms | home office

Standing proudly on the primely positioned, quiet cul-de-sac, this sprawling executive-style abode offers comfort, space and luxurious living with everything at your fingertips. Boasting multiple living areas and oversized bedrooms, complete with recently refurbished finishes throughout, your new home is the ideal space to enjoy tranquillity or entertain family and friends. Features You Will Love: LOWER LEVEL:- Expansive entertainers' kitchen is the main hub of the home with an abundance of bench space, gas cooking, dishwasher + built in pantry- Open plan living/dining area sits adjacent to the kitchen to allow for seamless entertaining, complete with air conditioning + ceiling fans- Sliding doors lead to the undercover alfresco area; enjoy entertaining family and friends all year round- Rumpus room fitted with ceiling fan that could be utilised as a media room or formal lounge- Bathroom is complete with a shower, vanity + toilet- Extra multi-purpose room with ceiling fan—perfect as a study, home office or even a 6th bedroom- Full size laundry with more storage, sorting benches and laundry chute from family bathroom UPPER LEVEL:- Parents retreat and master suite with double walk-in robes, private en-suite, air conditioning, ceiling fan and Juliette balcony to enjoy your morning coffee- Sparkling en-suite boasts shower + bathtub, large vanity with skylight, ample storage + toilet- Four generous bedrooms all feature built in robes + ceiling fans providing comfort all year round- Family bathroom features a shower, separate bathtub + vanity with storage; separate toilet BUT WAIT, there's more:- Full internal repaint + brand new carpets- Remote control garage to house 3 cars with internal access + extra storage space and 3-phase power- Fully fenced, low maintenance yard- Ample storage space throughout Location and Lifestyle:- 17 minute commute to Brisbane CBD- Located within Mansfield State High School and Wishart Primary Catchments, with close proximity to St Catherine's Catholic Primary School and Clairvaux MacKillop College co-educational secondary college- 6 minute drive to Westfield Garden City giving residents easy access to a huge variety of specialty shopping, restaurants, entertainment + supermarkets- 7 minute drive to local shopping, café, and amenities at Civic Fair- 600m walk to Wishart Community Park- Numerous public transport stops within walking distance- Water usage charges apply NOTE: Applications are unable to be processed until you or someone on your behalf has viewed the property. Please register to inspect.