

11 Queensbury Street, Schofields, NSW 2762

Sold House

Monday, 28 August 2023



11 Queensbury Street, Schofields, NSW 2762

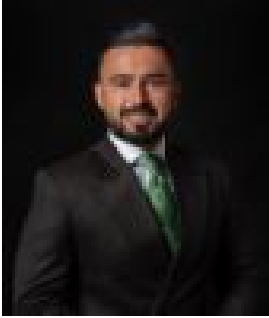
Bedrooms: 5

Bathrooms: 2

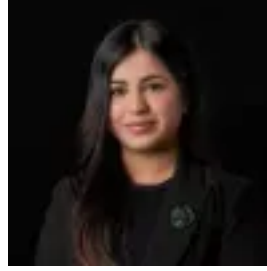
Parkings: 2

Area: 355 m2

Type: House



Amit Kumar
0288964336



Siya Sachdeva
0288964336

\$1,478,000

Built by the award-winning Clarendon this quality-built home is nestled within the highly sought-after neighborhood in Schofields, within a short distance to Schofields Public School, local parks, daycares, and public transport to the city. The home epitomizes modern living at its finest, thoughtfully designed to accommodate your every need offering an exceptional lifestyle for you and your family. You can trust the quality of the Clarendon fittings and finishes with a captivating open-plan living area of the home, maximizing both comfort and functionality. The home is a great size with a 29 sq construction with enough space to accommodate for all of your loved ones. The seamless flow from the contemporary kitchen to the inviting living and dining areas makes it ideal for hosting gatherings and creating lasting memories. Additionally, there is a formal living and entertaining area, upon entry to the home and also a rumpus area upstairs. The kitchen also features stone benchtops, high-quality stainless steel appliances, an eat-in breakfast bar as well as a walk-in pantry with an abundance of storage space. Accommodation consists of five beautifully planned bedrooms all with its own built-in wardrobes. The master bedroom boasts a private escape with an ensuite bathroom and walk-in wardrobe with ample closet space. The additional bedrooms cater to your every need – from a cozy guest room to a productive home office or a playroom for your little ones. Features you will love:- Double lock up garage with internal access- Beautifully manicured and low maintenance front and back yards - Plantation Shutters - 7.5 KW Solar Panel + 5 KW Solar Inverter - Upgraded beautiful light fittings - Builder: Clarendon Homes- Land Size: 356 sqm approx. - House size 29 sq- The home is sun-drenched throughout the whole day Location Highlights:- 5 minutes drive to Tallawong Metro Station- Short stroll to Schofields Train Station and Schofields Village- 5 minutes walk to Schofields Public School- 7 minutes drive to Rouse Hill Town Centre- Minutes walk to the local park Disclaimer: All information contained herein is obtained from property owners or third-party sources which we believe are reliable. We have no reason to doubt its accuracy, however, we cannot guarantee it. All interested person/s should rely on their own enquiries.