

# 11 Reynolds Road, Wattle Glen, Vic 3096

CHWYLA

## House For Sale

Friday, 10 May 2024

11 Reynolds Road, Wattle Glen, Vic 3096

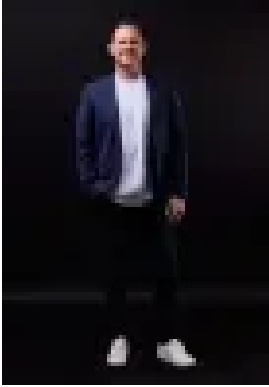
Bedrooms: 4

Bathrooms: 3

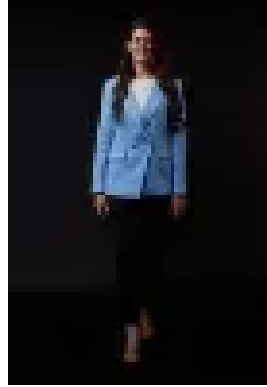
Parkings: 2

Area: 791 m2

Type: House



Paul Chwyla  
0386009995



Stacy Richards  
0386009995

**\$790,000 - \$850,000**

Make more of : 791m2 block Character weatherboard home Views Four bedrooms Three bathrooms Two living areas Double carport Double gated side access into significant backyard parking Asphalt driveway Front porch Ceilings with exposed beams Feature lighting White plantation shutters Blinds Downlights Dishwasher Pantry Laundry with built-in cabinetry Bedrooms with built-in robes Open fireplace Multiple split systems Ceiling fans Covered alfresco with ceiling fan Downstairs studio with kitchenette, bedroom, bathroom, alfresco, private entrance Wrap around undercover decking Established gardens Veggie gardens Lemon trees Two garden sheds Set back privately from the road 50m to Wattle Glen Primary School 200m to Wattle Glen General Store 250m to Peppers Paddock Playground 750m to Wattle Glen train station The initial appeal – A heartwarming home set back privately from the road, in very tightly held Wattle Glen. You'll love it all, the leafy landscaping, the baby blue front door, the open fireplace, the exposed beams. It just feels like home. The main attraction – There's just no way we can narrow this down beyond our top three: 1. Living in the dreamy character weatherboard you've always wanted, with leafy views 2. Double gated side access into significant backyard parking 3. A downstairs studio with a kitchenette, bedroom, bathroom, alfresco and private entrance via the side access. Your journey here starts this Saturday.