

# 11 Rostrata View, Mill Park, Vic 3082



## Sold House

Friday, 1 September 2023

11 Rostrata View, Mill Park, Vic 3082

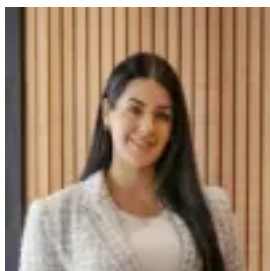
Bedrooms: 4

Bathrooms: 2

Parkings: 4

Area: 735 m2

Type: House



Ashlee Jade  
0397175372

**\$1,380,000**

ESR: \$1,250,000 - \$1,350,000 Nestled away in a quiet dead-end street and in arguably the most sought-after pocket of Mill Park, this stunning property offers a perfect blend of luxury, functionality, and style. Boasting impeccable presentation throughout, this family haven is ready to welcome its new owners with open arms. As you step through the grand front entrance, you're greeted by a spacious formal lounge adorned with plantation shutters, setting the tone for elegance and comfort. The striking floating timber flooring guides you into the heart of the home, where an expansive central kitchen awaits. This culinary masterpiece features stone benchtops with waterfall edges, glass splashback, ample cabinetry and quality appliances including dishwasher. The adjacent family/meals area is bathed in natural light, creating a warm and inviting atmosphere for gatherings. For those cozy evenings, a gas fireplace graces the family room, adding to the charm and comfort of the space. Entertain with flair on the outdoor decked alfresco, complete with cafe blinds, where you can enjoy the serene backdrop of your well-sized yard. With practicality in mind, this home offers an array of features including ducted heating and evaporative cooling, ducted vacuum, remote alarm system, double garage with a rear roller door, ample storage throughout, luxurious central bathroom with double vanities and downstairs powder room. Upstairs accommodating four generously sized bedrooms with built-in robes, providing comfort and space for the entire family, the master bedroom is a true retreat, featuring a massive walk-in robe and an ensuite with double vanities, stone benchtop, and an oversized shower plus kids retreat and stunning views. This property also presents the flexibility of a study/optional fifth bedroom, perfect for accommodating your unique needs. The sizeable laundry with extensive space for a home salon or second study plus huge rumpus room to the rear of this remarkable home. Within a very close proximity to reputable schools, shops, picturesque Plenty gorge parklands and convenient transport options, this home offers the ideal balance between urban convenience and natural tranquillity. Don't miss out on this exceptional opportunity to secure your dream home. Enquire today and seize the chance to experience the epitome of modern living in Mill Park!