

11 Scarlet Gum Crescent, Cannonvale, Qld 4802



House For Sale

Sunday, 26 May 2024

11 Scarlet Gum Crescent, Cannonvale, Qld 4802

Bedrooms: 4

Bathrooms: 2

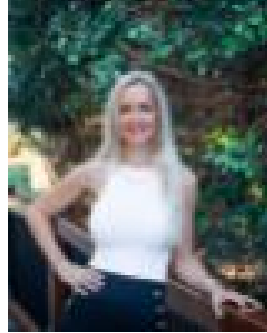
Parkings: 2

Area: 6840 m2

Type: House



Stephanie McWhirter
0749488500



Clarice Davis
0749488500

Offers

Welcome to 11 Scarlet Gum Crescent, Cannonvale, a contemporary haven nestled within the heart of Queensland's stunning Whitsunday coastal region. This exceptional 4-bedroom property offers an unrivalled lifestyle for first home buyers, investors, and families seeking space, comfort, and convenience. Put simply there truly is no comparable property in the area. This modern abode sits on a rare and expansive 6840 square metre parcel of land in a peaceful cul-de-sac, ensuring serenity and privacy. The intelligent design incorporates a gourmet kitchen with a spacious butler's pantry and a 900ml 5 burner gas top oven, perfect for those who love to entertain. The separate media room with a TV wall inlet provides an additional area for relaxation and family movie nights. Wake up to breathtaking ocean and island views from the huge balcony, accessible from the main bedroom, second bedroom, and the open plan dining/kitchen area. Green mountain and valley views are stunning as well. Porcelain tiles throughout add a touch of elegance and are a testament to the quality of this build. For practicality, there's a double garage, a separate toilet, his and hers ensuite to the main, and plans available for a 2-bedroom, 1 bathroom granny flat underneath, providing an opportunity for multi-generational living or additional income. The flat, usable land boasts ample space for a pool, shed or another dwelling allowing you to customise the outdoors to your liking with the potential to subdivide in the future. Located in a sought-after neighbourhood, this gem is just a stone's throw away from local shops, schools, an inviting park with walk paths, a covered playground and a flowing pond filled with local wildlife while also being only an 8-minute drive to Airlie, and a 20-minute journey to Shute Harbour and the Airport. Seize the chance to make 11 Scarlet Gum Crescent your new address, where luxury meets practicality in a setting that promises a life of comfort and convenience.