

11 The Broadway, Wahroonga, NSW 2076



House For Sale

Friday, 8 March 2024

11 The Broadway, Wahroonga, NSW 2076

Bedrooms: 4

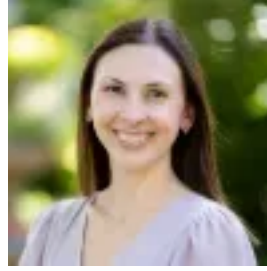
Bathrooms: 3

Parkings: 1

Type: House



David Walker
0294897474



Belinda Edwards
0294897474

AUCTION

Exuding tranquillity, serenity and privacy, this family home tucks peacefully from the road on a picturesque north-east facing block. The original 50's built, full brick home has been transformed into an effortless entertainer where generous living spaces spill easily out to expansive decks, a terrace and to lush green surrounds. Expansive banks of bi-folds, louvres and glass encourage the light and breeze making the areas stunning. The dual level floorplan is flexible with an upper level 2nd living with fireplace or optional office/4th bedroom plus a lower level rumpus room that could also be the 4th bedroom. The master is a superb retreat with an ensuite and expansive balcony which enjoys the green outlook. There is scope to add further value here in a superb pocket, a stroll to bus services, village shops, Sydney Adventist Hospital and Wahroonga Adventist School. Accommodation: * Full brick home, high ceilings, original timber floorboards * Three large upper level bedrooms, two with built-in robes * Master with an ensuite and balcony, lounge or 4th bedroom * Expansive lower level L shaped living and dining rooms * Gourmet stone wrapped island kitchen with a gas cooktop * European appliances, walls of bi-folds, banks of louvres * Unique glass conservatory style roofline over the dining * Spacious rumpus or 4th bedroom option, generous storage * Reverse cycle air conditioning, modern bathrooms, laundry External Features: * Private from the street, generous N/E facing block * Upper level large balcony with a green outlook * Substantial cascading entertainer's decks, side courtyard * Alfresco terrace with retractable blind, level lawn area * Lush gardens, single carport Location Benefits: * 55m to the 573 bus services to Turramurra Station and village, the Sydney Adventist Hospital and Wahroonga Adventist School * 300m to the local shops and cafes * 500m to access to walking tracks * 850m to George Christie Playing Field * 850m to Sydney Adventist Hospital * 900m to Wahroonga Adventist School * Warrawee Public School catchment * Moments to Turramurra, Warrawee and Wahroonga stations * Easy access to Knox Grammar and Abbotsleigh Auction Wednesday 27 March, 5:30pm In rooms - 2 Turramurra Avenue, Turramurra Contact [David Walker](#) 0414 184 911 [Belinda Edwards](#) 0451 672 977 Disclaimer: All information contained here is gathered from sources we believe reliable. We have no reason to doubt its accuracy, however we cannot guarantee it.