

110/611-615 Sydney Road, Brunswick, Vic 3056



Sold Apartment

Thursday, 11 January 2024

110/611-615 Sydney Road, Brunswick, Vic 3056

Bedrooms: 1

Bathrooms: 1

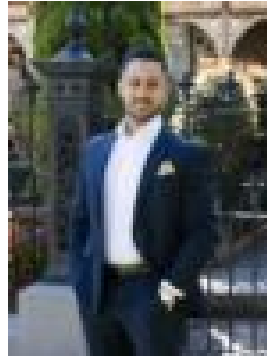
Parkings: 2

Area: 87 m2

Type: Apartment



Stefan Stella
0422093149



Ricardo Rodrigues
0407806893

\$600,000

Absolutely one of a kind, this developers-own first-floor apartment incorporates the original upstairs of the old Court House Hotel (c1859) providing an on-trend environment of light and luxury while still retaining the high ceilings and impressive dimensions of its publican past. An incredibly unique city-edge lifestyle opportunity offering a total floorspace of approximately 96sqm, the home's impressive interior comprises an extra-large bedroom with WIR and deluxe central bathroom complete with floor-to-ceiling marble tiling. Add to this a versatile open-plan living/meals area with gas-log fireplace complemented by a superb kitchen complete with 40mm stone benchtops and breakfast bar, soft-close cabinetry and premium Smeg appliances (dishwasher, oven, induction cooktop and rangehood). Other stand-out features of the apartment include split-system heating and cooling (living area and bedroom), original 1859 windows with double-glazed windows fitted to the inside, double blinds and two remote-control skylights, engineered timber floors and European laundry with trough. Rounding out this amazing lifestyle package is a private courtyard (from the living area), secure entry, CCTV on all levels, plus lock-up garage with remote access, second parking space and three storage cages. The best of Brunswick quite literally at your doorstep including an endless array of cafes, bars and renowned restaurants, boutique shops and major supermarkets, as well as Anstey Station and trams to hospital/university precincts and the CBD. All information about this property has been provided to Ray White by third parties. Ray White has not verified the information and does not warrant its accuracy or completeness. Parties should make and rely on their own enquiries in relation to this property.