

110 Joy Chambers Circuit, Ripley, Qld 4306

House For Sale

Tuesday, 21 November 2023

110 Joy Chambers Circuit, Ripley, Qld 4306

Bedrooms: 3

Bathrooms: 2

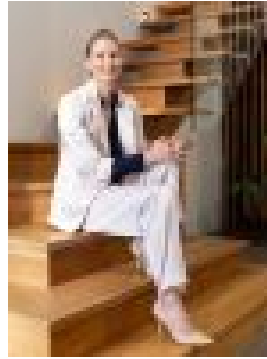
Parkings: 1

Area: 319 m2

Type: House



Scott Blaney



Renee Snedden
0404010572

Offers over \$550,000

Located directly opposite parklands and within walking distance to all the amenities on offer at Ripley Town Centre including Coles, this meticulously maintained property is the epitome of low maintenance living. Featuring an easy flowing floor plan, light-filled interiors, and low maintenance gardens, this home offers all the modern comforts, and more time for the things you love. Carefully designed to maximise living space, the open plan living area takes centre stage, combining the kitchen, dining and family area. The modern kitchen offers everything you need for entertaining family and friends alike including stone benchtops, large 900mm freestanding cooker with gas cooktop and electric oven, externally ducted rangehood and soft close doors and drawers. Located off the family area, glass sliding doors lead you directly out to the tiled, covered outdoor living area that further extends your living space and offers access to the generous backyard. Offering maximum peace and privacy, the principal suite with ensuite, walk-in robe and air conditioning is located at the front of the home. The remaining bedrooms are positioned at the rear of the home and conveniently surround the main bathroom. Key features of the home include:- Open plan kitchen, dining and family area with air conditioning and ceiling fan to family area- Large covered outdoor living area extends your living space and overlooks usable backyard with pedestrian side access- Modern kitchen features stone benchtops, 900mm freestanding oven with gas cooktop and electric oven, externally ducted rangehood- 2590mm high ceilings throughout- Security screens to doors and windows- Principal suite features ensuite, walk-in robe and air conditioning- Secondary bedrooms feature ceiling fans and built-in robes with bed 3 also featuring air conditioning- Truecore steel frame construction and Colorbond roof- Single lock-up garage with remote door and safe and secure access directly into the home- Laundry located in garage

The prime location offers something for everyone, including your pets! Located directly opposite you'll find green open space and walking paths leading you to the off-leash dog park (Pebbles Park) and playground featuring cricket pitch and basketball court. Continue following the extensive walking paths and you'll find regional park - Faye Carr Park (or as the locals call it, Rocket Ship Park) with playgrounds for all ages from toddlers to teenagers and adults alike! The convenience of Ripley Town Centre is just a short walk or few minutes' drive away. Ripley Town Centre is currently home to Coles, medical centre and pharmacy, Anytime Fitness, café, take-away shops, and various specialty stores – and with more to come with Stage 2 development application submitted to Ipswich City Council. Multiple schools and childcare centres are also located within the local area including Ripley Valley State School, Ripley Central State School (opened 2023), Ripley Valley State Secondary College and Raceview State School. Ripley is one of the fastest growing suburbs in south-east Queensland. With strong highway connections, infrastructure and amenity already in place, and more planned projects underway, Ripley is primed for investment to make way for the projected 48,000 new dwellings and 131,000 people*. Ripley is located:- 10km south-east of Ipswich- 13km from Springfield Lakes- 43km south-west of Brisbane

This property offers everything you need, and nothing you don't. Call today to arrange an inspection and get more out of life with this low maintenance property located in the heart of it all. Disclaimer: All distances are approximate only. *Source: Queensland Government, State Development, Infrastructure, Local Government and Planning.