

110 Shirley Road, Roseville, NSW 2069

DiJONES

Sold House

Thursday, 5 October 2023

110 Shirley Road, Roseville, NSW 2069

Bedrooms: 4

Bathrooms: 3

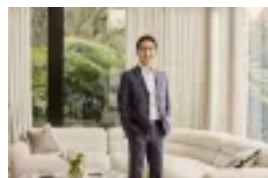
Parkings: 2

Area: 696 m2

Type: House



Adam Wong
0299086099



Nathan Zhuang
0425517888

Contact agent

This charming full brick character home basks on a 696sqm northeast-to-rear level parcel in one of Roseville's finest tree-lined streets. A flawless display of timeless charm fused with sophisticated contemporary updates has created a wonderful family home for young families, empty nesters and those looking for an easy peaceful lifestyle. Fully renovated and light filled, it offers a generous floorplan that opens to a large outdoor entertaining area and private landscaped gardens. Under non-heritage conservation area, with potential for further development (STCA).The sought after leafy setting enjoys bus services to the Chatswood Station, Lindfield village and Macquarie at your doorsteps, and is a short stroll to the popular Lindfield Learning Village School and the Charles Bean Sports Fields. Easy access to Roseville village for a mix of cafés, boutique shops and restaurants. It's also close to Roseville College, North Shore private schools and Chatswood's world-class shopping and dining.-Sun-soaked family living with wall of floor-to-ceiling glass showcasing exquisite garden vistas-Sleek open plan stone kitchen with full complement of Miele appliances and breakfast bar-Sundrenched entertainer's deck spills to generous child-friendly level gardens-Bright and spacious bedrooms, lounge/fourth bedroom, two with ensuite-Contemporary bathrooms with smart toilets, high ceilings, charming period cornices, quality floorboards, plantation shutters-Air conditioning in every room, carport and off-street parking, large storeroom/shed, video intercom-Premier Roseville address close to rail, schools, restaurants and village shops-Bus in street offering direct access to Chatswood, Lindfield Learning Village and Macquarie Uni.