

**1102/349 New South Head Road, Double Bay, NSW  
2028**



## **Apartment For Sale**

Friday, 17 May 2024

1102/349 New South Head Road, Double Bay, NSW 2028

**Bedrooms: 3**

**Bathrooms: 2**

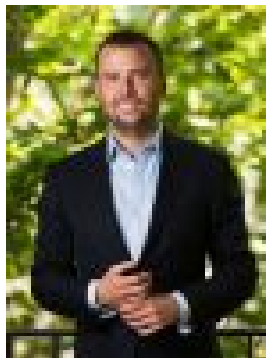
**Parkings: 1**

**Area: 152 m2**

**Type: Apartment**



Penny Timothy  
0283562700



Luke McDonnell  
0283562700

## Auction

Experience breathtaking harbour views spanning from Sydney Heads to the city skyline from this expansive apartment, presenting an exceptional canvas for a renovation masterpiece. Nestled within the esteemed 'Bibaringa' complex, envisioned by the distinguished mid-century architect and furniture designer, Douglas Snelling, the residence boasts a distinctive fishpond water entry leading to the iconic timber panelled lobby. Situated on the sub-penthouse Level 11, Apartment 1102 offers a serene sanctuary atop one of the Eastern Suburbs' highest points, accessible via direct lift entry. Bathed in natural light and capturing refreshing summer breezes through windows on three sides and two balconies, this spacious apartment promises a unique living experience. The accommodation comprises three generously sized bedrooms with built-in wardrobes, highlighted by a main bedroom featuring an ensuite, additional walk-in robe, and a private balcony overlooking the picturesque harbour. The enormous eat-in kitchen has views to Woollahra. Adjacent to the Bibaringa lobby, the apartment title includes the largest lock-up garage in the building. Conveniently located a short stroll from Double Bay's vibrant shops, cafes, and transport options, this residence offers: Open-plan living dining area with a terrace maximising the panoramic views. Internal laundry within the bathroom, with an additional 4m<sup>2</sup> laundry on title located between levels 11 and 10 stairwell. Air conditioning for year-round comfort. Generous visitor parking. Access via a long private driveway surrounded by lush tropical gardens