

**1102/576 St Kilda Road, Melbourne, Vic 3004**

**KAY & BURTON**

**Sold Apartment**

Saturday, 25 November 2023

1102/576 St Kilda Road, Melbourne, Vic 3004

**Bedrooms: 3**

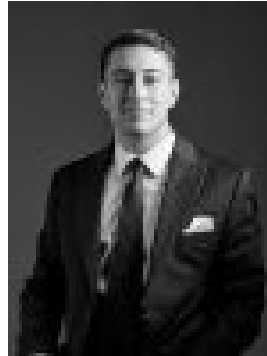
**Bathrooms: 2**

**Parkings: 2**

**Type: Apartment**



Gary Ormrod  
0419588331



Dario Fazio  
0398201111

## Contact agent

Panoramic views, generous proportions and world-class resort-style amenities offer a lifestyle without compromise at this luxurious apartment in the acclaimed Yve building on Melbourne's iconic boulevard. Masterfully designed by award-winning architects, Wood Marsh, Yve has a curvaceous presence like no other on St Kilda Road. From this designer residence securely set on the 11th floor, views which can never be outbuilt sweep down St Kilda Road and across the playing fields of Wesley College to South Yarra and beyond while also spanning the waters of Albert Park Lake and out to Port Phillip Bay. Wrapped in entire walls of glass, this light-filled apartment features marble and timber finishes throughout. The curved living and dining zone frames picture perfect views to the east while opening to a balcony promising memorable entertaining. The gourmet kitchen with marble benchtops, includes a marble island bench and quality stainless steel appliances and integrated fridge/freezer. The lavish master bedroom with a walk-in robe and a substantial ensuite has a view of Albert Park Lake, while two more bedrooms with built-in robes share an equally well-equipped central bathroom. This exceptional apartment is further enhanced by video intercom, reverse cycle heating and cooling, two secure car spaces, large storage cage and fabulous resident facilities of gymnasium and health spa with heated swimming pool, spa, sauna and steam rooms, private cinema and 24 hour concierge. Just a five-minute walk to Wesley, Yve is close to many other elite schools. Walk to the Royal Botanic Gardens, Fawkner Park, Albert Park Lake or jump on a tram to the arts precinct and the CBD.