

**1103/140 Wellington Road, Kangaroo Point, Qld
4169**



Sold Other

Wednesday, 14 February 2024

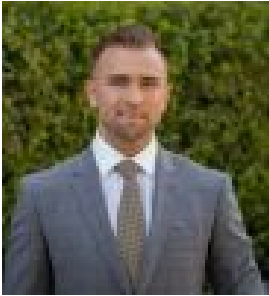
1103/140 Wellington Road, Kangaroo Point, Qld 4169

Bedrooms: 2

Bathrooms: 2

Parkings: 1

Type: Other



Josh Hooton
0732541022

\$800,000

An enticing lifestyle awaits at 'The Sinclair', a residential development by Mosaic, created in partnership with Rothelowman - one of Australia's most renowned architects - completed in September 2022. An award winning* architectural complex located in East Brisbane relish the convenience of living two kilometres from the CBD. Adjacent to sprawling Raymond Park, enjoy proximity to the vibrant Woolloongabba Precinct and its iconic 'Gabba' stadium as well as a multitude of parks, cafes and public transport options, along with the Kangaroo Point Cliffs and Brisbane River.

PROPERTY FEATURES INCLUDE:

- 2 Bedrooms
- 2 Ensuite bathrooms with custom cabinetry, semi-frameless shower screens, full-height tiles and ample storage
- 1 Powder room
- 1 Car park
- 98 SQM
- Custom kitchen with reconstituted stone benchtops and built-in appliances
- Ample storage with separate linen cupboards, and built-in laundry
- Secure basement car park
- Video security to apartments
- Ducted air conditioning and roller blinds throughout, and ceiling fans in both bedrooms
- Immaculate condition, build completed in September 2022

Positioned on the first floor, this modern apartment boasts a north-eastern position with an open plan layout. Seamlessly integrating indoor and outdoor spaces, enjoy a living and dining area that flows freely onto the expansive balcony, creating an indulgent sense of space, inviting you to entertain or relax. High ceilings as well as full-length, architectural double glazed sliding doors and windows allow ample natural light to stream in, encouraging airflow, while creating a quiet, peaceful haven to call home. The carefully considered layout thoughtfully maximises the space to include two master bedrooms, both with private ensuites, full-height built-in mirrored robes and one with access to the balcony. Residents are treated to exclusive amenities including an incredible rooftop recreation level with a generous pool, outdoor cinema, barbecue and entertaining areas nestled amongst lush gardens with breathtaking city views, a Technogym equipped health and wellness centre and a library. Featuring a limited collection of apartments across two eight level boutique buildings, connected by an innovative skybridge and ground floor retail, this is inner-city resort-living at its finest. Superbly located in the historic and prestigious enclave, the award winning* 'The Sinclair' by Mosaic represents the very best of contemporary apartment living. Just minutes to the CBD, Howard Smith Wharves and Eagle Street Pier, with an abundance of world-class dining, retail, healthcare, education and entertainment on your doorstep, indulge in the perfect combination of impeccable location, sophisticated design and enviable lifestyle and convenience this address has to offer.

*State Finalist UDIA Qld Construction Excellence 2023, Winner UDIA Qld High Density Under 10 Storeys 2022.

BUILDING FEATURES

- Completed in 2022
- 122 2 & 3-Bedroom apartments
- Two eight level towers
- Ground-floor retail
- Exclusive amenities include
- Rooftop recreation level with breathtaking city view
- Generous pool
- Outdoor cinema
- Barbecue & entertaining areas
- Lush gardens
- Technogym equipped health & wellness centre
- Library

SUBURB FEATURES

- Lifestyle
- Proximity to Raymond Park (with outdoor gym, soccer field and dog park) & Mowbray Park
- 1km (15 min walk) to Kangaroo Point Cliffs
- Ample local cafes and restaurants nearby
- 5 min walk to local shopping/medical centre
- Transportation
- 3km to CBD (10 min drive) to Brisbane CBD
- 2km (5 min drive) to Howard Smith Wharves & Eagle Street Pier
- 1km (15 min walk) to Woolloongabba Station & Stadium
- 1km (15 min walk) to Mowbray Park Ferry Terminal
- Excellent access to transport via ferries, City Cats, Buses, Clem Jones tunnel (M7), South-East Freeway and Story Bridge.
- Education
- East Brisbane State School
- *Coorparoo Secondary College Catchment Area
- Proximity to St Joseph's Primary School, Anglican Church Grammar School (Churchie) All Hallow's School, Somerville House School.