

1105/1 Brodie Spark Drive, Wollie Creek, NSW 2205



Apartment For Sale

Wednesday, 29 May 2024

1105/1 Brodie Spark Drive, Wollie Creek, NSW 2205

Bedrooms: 2

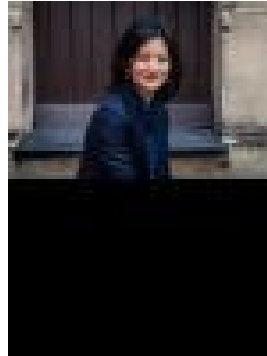
Bathrooms: 2

Parkings: 1

Type: Apartment



Dimi Kostopoulos
0474444034



Jessica Pung

\$940,000 - \$990,000

At 21 storeys, Summit sits above its neighbours as one of Discovery Point's tallest buildings. This beautiful apartment has an extensive list of features including:

- East facing aspect
- Open plan combined lounge and dining
- Sleek modern kitchen with stone bench tops and Smeg appliances
- Extensive floor to ceiling windows
- Bedroom and lounge have access to balcony
- 1 x secure undercover car space plus storage cage
- Large balcony, internal laundry
- Easy access to village shops, cafés and restaurants
- Lively village atmosphere in a park side setting
- Access to 4 gyms, 4 pools areas within Discovery Point
- Short walk to the on-site Wolli Creek train station
- Only 3 stops to Central station
- Only 1 stop from Sydney Airport

Council Rates - Approx. \$371 per quarter
Strata Levies - Approx. \$1607 per quarter
Water Rates - Approx. \$245 per quarter

Moments from the Cooks River foreshore, surrounding parklands, the lively Village Square retail precinct, and with direct access to the on-site train Wolli Creek train station, Summit offers the ultimate in designer apartment living in a truly unique and convenient location. Discovery Point residents enjoy all that this vibrant community has to offer including the convenience of the village square with its cafés, restaurants and specialty shops, a train station within Discovery Point and over 3 hectares of parks and gardens.

***SOME OF THE IMAGES WITHIN THIS ADVERTISEMENT ARE VIRTUALLY FURNISHED**