

1110/27-37 Bells Boulevard, Kingscliff, NSW 2487



Sold Apartment

Wednesday, 17 April 2024

1110/27-37 Bells Boulevard, Kingscliff, NSW 2487

Bedrooms: 2

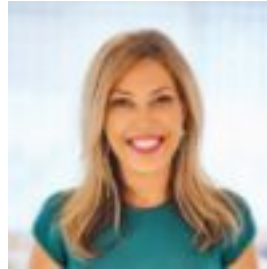
Bathrooms: 2

Parkings: 2

Type: Apartment



Erin Nielsen
0266741000



Amy Sanderson
0266741000

Contact agent

Welcome to Bale On Salt, an exquisite haven of luxurious, coastal lifestyle nestled in the picturesque Tweed Coast. This exclusive resort complex, situated in the Salt Village, Kingscliff, boasts an unrivalled, absolute beachfront positioning and is a mere 15 minutes from Gold Coast International Airport and 30 minutes to Byron Bay. Immerse yourself in the coastal lifestyle with a patrolled beach just steps away and an array of cafes and dining options at your fingertips. Boasting two generous bedrooms with additional multi-purpose room, currently used for extra sleeping space complete with bunk beds, there is plenty of room for the whole family to enjoy. Current configuration sleeps six guests. Step into a world of opulence as the spacious open plan living area seamlessly flows onto a generous wrap-around balcony. Here, you can unwind to the soothing sounds of the waves rolling in, capturing those cool coastal breezes. The well-appointed kitchen boasts Miele appliances, generous breakfast bar, gas cooktop and stone benchtops. The centrepiece of the open lifestyle zone, perfect for both beachfront living and entertaining. Indulge in the private 25m resort pool, surrounded by lush tropical gardens, and find relaxation in the adjoining outdoor spa and lounge area, exclusively available to Bale Apartment residents and guests. Additionally, you have exclusive access to the adjacent Peppers Resort facilities, which include two lagoon pools, gymnasium, tennis courts, bar, restaurant and conference rooms. This stunning residence is being offered fully furnished and with a loyal following of repeat and referral customers, this exclusive holiday retreat has become a beloved destination year after year.

PROPERTY FEATURES:- Direct, patrolled beach access from resort - Sleeps six guests - 2 generous bedrooms plus additional multi-purpose area with bunk beds - Master ensuite complete with jacuzzi spa bath and parkland views - Generous wrap around balcony overlooking Central Park - Central, well appointed kitchen with Miele appliances, stone benchtops - Ducted air conditioning throughout - Fully equipped internal laundry - Dedicated secure basement parking for 2 vehicles - Large lockable storage cage - Pet friendly (for apartment owners) - Fully furnished

RESORT FACILITIES:- 25m Pool - heated during winter months - Outdoor spa and lounge entertaining area - Gymnasium - Tennis Courts - Lush, sub-tropical gardens and manicured lawns - Lift access to all levels from secure basement carpark - Wheelchair Access - Function/conference rooms available - Onsite management if required

With high occupancy rates inspections are limited, call Erin on 0414 259 605 to arrange your private inspection or for further information. **THE LOCATION:-** 15 mins to Gold Coast International Airport - 5 mins to Kingscliff Hospital (To Be Completed April 2024) - 35 Mins to Byron Bay - 150m to Shops, Cafes, Restaurants & Bars

Disclaimer: All information (including but not limited to the property area, floor size, price, photos, address and general property description) is provided as a convenience to you and has been provided to LJ Hooker by third parties. LJ Hooker is unable to definitively confirm whether the information listed is correct or 100% accurate. LJ Hooker does not accept any liability (direct or indirect) for any injury, loss, claim, damage or any incidental or consequential damages, including but not limited to lost profits or savings, arising out of or in any way connected with the use of any information, or any error, omission or defect in the information, contained on the Website. Information contained on the Website should not be relied upon and you should make your own enquiries and seek legal advice in respect of any property on the Website. Prices displayed on the Website are current at the time of issue, but may change.