

# 1110/639 Lonsdale Street, Melbourne, Vic 3000

## Apartment For Sale

Friday, 8 March 2024

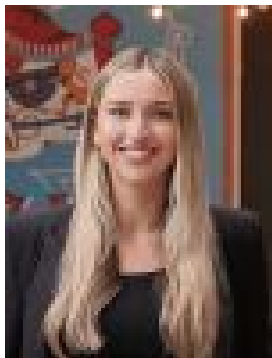
1110/639 Lonsdale Street, Melbourne, Vic 3000

Bedrooms: 2

Bathrooms: 2

Parkings: 1

Type: Apartment



Talisa Paris  
0434087302



Rah Anasril  
0447570445

**\$575,000 - \$595,000**

Desirably positioned in the exclusive 'Upper West Side's Madison Building', this stylish apartment offers a luxurious lifestyle of low-maintenance ease. Inspiring views including iconic Marvel Stadium are captured from the private balcony and throughout the light-filled open-plan living/dining area and gourmet stone-topped kitchen. Enjoy the comfort of 2 robed bedrooms (main with luxe ensuite), chic bathroom and split system heating/AC. Boasting a prominent location, just a stone's throw to Southern Cross Station, Direct Factory Outlet, walking distance to Coles, Flagstaff Gardens, Etihad Stadium, Docklands, shopping, cafes and restaurants and tram right on your doorstep. To arrange a time to inspect this property, click Book an Inspection Time or Email Agent to access our online booking system. By registering, you will be INSTANTLY informed of any updates, changes, or cancellations for your appointment. Whilst we endeavour to represent this property information to the best of our knowledge and have no reason to doubt any inaccuracy, this information has been provided to us by the property owner and we therefore accept no responsibility and disclaim all liability in respect to any errors, omissions, inaccuracies or misstatements in any information. We encourage buyers to make their own enquiries and refer you to the due diligence checklist provided by Consumer Affairs for further information: <http://www.consumer.vic.gov.au/duediligencechecklist>