

111P/191 Powlett Street, East Melbourne, Vic 3002



Apartment For Sale

Wednesday, 15 May 2024

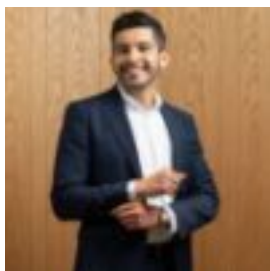
111P/191 Powlett Street, East Melbourne, Vic 3002

Bedrooms: 1

Bathrooms: 1

Parkings: 1

Type: Apartment



ELLI BLANCO
0407393007



MAY WANG
0475762103

Private Sale \$470,000 - \$485,000

Warehouse-inspired and perfectly located within the land-marked Victoria Brewery this beautiful & stylish apartment makes for the perfect choice for those seeking quality, style and convenience. Offering a convenient space, this gem offers one bedroom with a built-in robe, a stylish bathroom, open living, and dining areas and a sunny balcony. Facilities include a roof space pool, gym and secure basement parking, the top-to-bottom appeal of an address that's a first home you'll never forget, or an investment you'll never regret. This prestigious city edge setting where the building's own IGA supermarket, cafes, florist and hairdresser complement convenient ideal proximity to the Paris end of Collins Street and all the latest culinary delights of Smith and Gertrude Streets.