

112 Copeland Street, Penrith, NSW 2750

Property
Alchemy

House For Sale

Saturday, 27 April 2024

112 Copeland Street, Penrith, NSW 2750

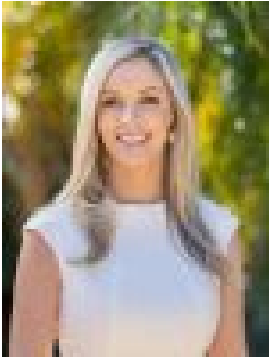
Bedrooms: 3

Bathrooms: 1

Parkings: 1

Area: 556 m2

Type: House



Belinda Urquhart
0300896050

Price Guide \$850,000 - R4 Zoned

Positioned in a lovely street yet within walking distance from central Penrith, this delightful family home offers a fantastic lifestyle with two living areas, a charming kitchen, and an outdoor deck overlooking the spacious backyard. As you enter the home, you will be welcomed in to a large lounge room with a fireplace and plenty of room for the whole family making it an inviting space to gather. The adjacent kitchen is light and airy with beautiful timber cabinetry and ample space for a dining setting. Perfect for larger families, there is also a second living area with high raked ceilings, a fireplace, and access out to the deck. Step outside where you can enjoy a barbeque lunch with family and friends on the deck while the kids and pets play in the secure fully fenced backyard. This outstanding location is ideal for families and young professionals with parks, transport, and shops all within 1km while Sydney's CBD is around a 45 minute drive away. If you have been searching for a family home in a central area close to amenities, this property ticks all the boxes! * 3 bedrooms, 1 bathroom, single garage with workshop area * Two lounge rooms * Eat-in kitchen * Outdoor deck * High ceilings * Fireplace in both lounge rooms * Separate laundry * Main bedroom has twin walk-in robes * Level 556m² corner block * Fully fenced backyard * 70 metres from the bus stop * 650 metres from St Dominic's College * 900 metres from High Street with shops, cafes and restaurants * 950 metres from Parker Street Reserve * 1.2km from TAFE * 1.3km from Penrith Public School * 1.5km from Nepean Hospital * 1.6km from the Penrith train station and Westfield * Approximately a 45 minute drive from Sydney's CBD Zoned R4 High Density Residential.