

112 Golf Links Drive, Beveridge, Vic 3753



House For Sale

Tuesday, 9 April 2024

112 Golf Links Drive, Beveridge, Vic 3753

Bedrooms: 4

Bathrooms: 2

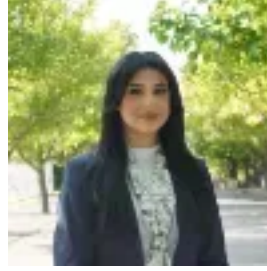
Parkings: 2

Area: 476 m2

Type: House



Steph Shepherdson
0393082277



Brandice Rizkalla
0393082277

\$650,000 - \$690,000

Opposite parkland and playgrounds, this expansive Mandalay Estate entertainer provides a high quality of life. Resort-style living, enjoy full member access to Club Mandalay including its golf course, café and bistro, swimming pool, gym and tennis courts. The right balance of private rooms and shared spaces and embracing a love of indoor- outdoor living, the continuous-flow layout is framed by high ceilings, clever window design and abundant natural light. A formal living area and adjoining study flow through to a stylish primary bedroom suite showcasing a walk-in robe and a deluxe ensuite. Three additional bedrooms all come with built-in robes and share another ultra-modern bathroom. Large families will also appreciate the versatility of the home theatre. Taking centre stage, an upscaled kitchen/living/dining zone is anchored by a gourmet kitchen boasting custom cabinetry, generous bench space, high-end appliances and a walk-in butler's pantry. Set against quality synthetic lawn and low-maintenance gardens, sliding doors roll back to reveal a spacious backyard and an expansive patio area. Occupying a sunny 476sqm, other highlights and creature comforts include a family-sized laundry with extra storage, ducted heating and cooling plus a double remote garage with internal and rear yard access. Modern design excellence with the perfect floorplan for today and tomorrow, come home to 112 Golf Links Drive. **DISCLAIMER** The vendor, agent and agency in preparing this information have used our best endeavours to ensure that the information contained therein is true and accurate but accept no responsibility and disclaim all liability in respect of any errors, inaccuracies or misstatements contained herein. Prospective purchasers should make their own inquiries to verify the information contained herein.