

# 113/107-115 Pacific Highway, Hornsby, NSW 2077

STONE

## Sold Apartment

Sunday, 17 December 2023

113/107-115 Pacific Highway, Hornsby, NSW 2077

Bedrooms: 2

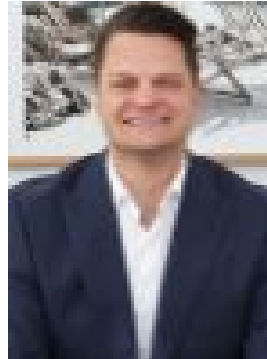
Bathrooms: 2

Parkings: 1

Type: Apartment



Geraldine XiaoBin Wang  
0452562183



Adam Noakes  
0450753268

**\$730,000**

Sold by Geraldine Wang & Adam Noakes 0452 562 183 This private high floor apartment boasts impressive indoor and outdoor living spaces with constant sweeping panoramic views; open plan gas kitchen off spacious lounge/dining areas; good sized bedrooms in a security double brick building, well managed complex with a site manager, heated swimming pool, sauna, spa and gym. It is located with easy walk to Hornsby CBD, the main train/bus interchange, Westfield shopping precinct, schools and parks. It is ideal for downsizers, or a family seeking easy care living and yet enjoying long distant view. Features:- Balcony soaked in afternoon sun with impressive views- Open plan bright living/dining with picturesque window views- Gourmet kitchen with brand new gas cooktop, dishwasher- Spacious two bedrooms with built-in wardrobes, master with ensuite- Main bathroom with brand new vanity, one bathroom with a bathtub- Internal laundry and welcoming entrance - Timber flooring throughout- Double brick building with security intercom - Secure underbuilding lock up garage- Heated pool, sauna, spa, gym and dedicated onsite manager- Total size 121sqm. Location benefits:- 300m approx. to Hornsby Westfield- 450m approx. to Hornsby Station- 150m approx. to Barker College- 350m approx. to Hornsby Girls High School- 1.7km approx. to Hornsby Hospital- 450m approx. to Hornsby RSL Club- 800m approx. to Hornsby Aquatic and Leisure Centre- 850m approx. to Hornsby TAFE- Many good schools and parks nearby. To truly appreciate what this property has to offer contact Geraldine Wang 0452 562 183. "We have obtained all information in this document from sources we believe to be reliable; however, we cannot guarantee its accuracy. Prospective purchasers are advised to carry out their own investigations.