

113 Adams Road, Trott Park, SA 5158



House For Sale

Monday, 15 April 2024

113 Adams Road, Trott Park, SA 5158

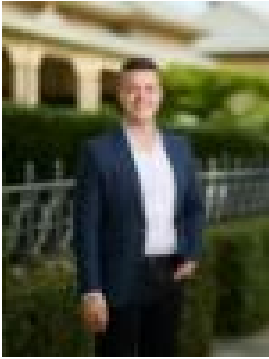
Bedrooms: 4

Bathrooms: 2

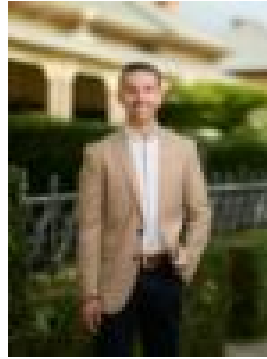
Parkings: 1

Area: 700 m2

Type: House



Cameron Bowes



Blake Willemer
0481533863

- Under Contract -

Please contact Cameron Bowes or Blake Willemer to discuss a viewing time. Discover boundless potential and cherished memories waiting to unfold in this beloved family abode nestled in a serene, family-friendly suburb. Immaculately presented and thoughtfully designed, this residence offers a harmonious blend of comfort and functionality. Boasting four bedrooms and multiple living areas, including a generously sized kitchen and a covered outdoor entertaining space, it caters effortlessly to the needs of modern family living. The heart of the home lies an open-plan kitchen and family area, providing ample space for relaxation and socializing. For more formal gatherings, the separate lounge and dining area offer an inviting ambiance, seamlessly extending to the outdoor entertaining space, perfect for enjoying leisurely summer BBQs. The home has four spacious bedrooms, the master suite featuring an ensuite and a large parent retreat which could also be a home office or fifth bedroom. A stunning garden graces the front, requiring minimal maintenance and inviting you to revel in the natural beauty surrounding your home. Convenient rear access leads to a backyard adorned with a substantial shed and carport, catering to the needs of hobbyists, tradespeople, or outdoor enthusiasts. Situated within walking distance of parks, schools, and local amenities, and with easy access to public transport and major thoroughfares, commuting is effortless. Overflowing with charm and untapped potential, this residence beckons you to seize the opportunity and transform it into your dream home. Don't miss out on the chance to create lasting memories in this enchanting haven.

What we love about this home
New carpet in living room
Multiple living spaces
Outdoor entertaining area
Master bedroom with ensuite and retreat
Heating and cooling
Low maintenance
700sqm block
Ample off-street parking
Large shed
Great proximity to schools, parks and shops

Disclaimer: Every care has been taken to verify the correctness of all details used in this advertisement. However, no warranty or representation is given or made as to the correctness of information supplied and neither the owners nor their agent can accept responsibility for errors or omissions. RLA: 327058