

113 Hughes Parade, Reservoir, Vic 3073

House For Sale

Friday, 1 March 2024

113 Hughes Parade, Reservoir, Vic 3073

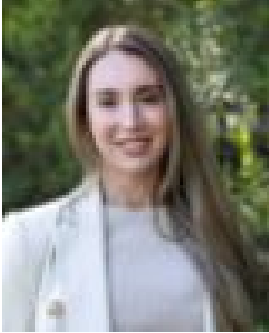
Bedrooms: 3

Bathrooms: 2

Parkings: 2

Area: 837 m2

Type: House



Stephanie Lentini
0390705095



Anthony Lapadula
0390705095

\$950,000 - \$1,045,000

Nestled in a serene setting on approx. 835 square metres, this meticulously maintained home offers spacious interiors and an array of family-friendly features. With diligent care over the years, this residence radiates a palpable sense of pride of ownership, ensuring years of comfort and enjoyment for the new owners. Boasting generous proportions, this home offers three spacious bedrooms, two adorned with large robes with ample storage. Accompanied by two bathrooms and two powder rooms (one situated outdoors), comfort and convenience are paramount in every aspect of this home. Step into a realm of practicality, where the expansive lounge and formal dining areas invite cosy gatherings and create lasting memories. The heart of the home lies in the kitchen/meals/family area, complete with stainless steel cooking appliances and granite benchtops, creating an ambiance of culinary delight. Entertain in style in the rumpus room, equipped with a built-in bar, perfect for hosting guests or enjoying leisurely evenings with family. Stay comfortable year-round with ducted heating and refrigerated cooling, while roller shutters provide privacy and security at your fingertips. Outside, the allure continues with a sizeable backyard, two-car garage featuring a storage area and a convenient secondary kitchen for outdoor entertaining. Additional features include polished timber floorboards, separate laundry with plenty of storage and built in iron, ample off street car accommodation, two large rainwater tanks, lock up shed and a gas connected BBQ ensuring your outdoor living experience is nothing short of exceptional. With a bus stop conveniently located right at your doorstep, this home offers easy access to popular primary schools, high schools, kinder/childcare facilities, local parks, and the picturesque Merri Creek trails. Additionally, Ruthven train station, sought after shopping precincts and the Ring Road are within easy reach ensuring convenience and connectivity for your daily commute and leisure activities.