

115 Centre Road, Langwarrin, Vic 3910



House For Sale

Saturday, 11 May 2024

115 Centre Road, Langwarrin, Vic 3910

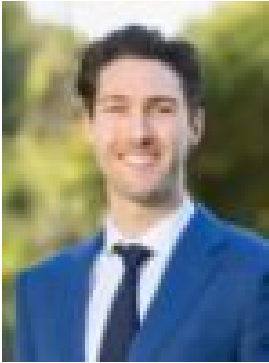
Bedrooms: 3

Bathrooms: 2

Parkings: 4

Area: 711 m2

Type: House



Terry Wheeler
0397812111



Austin Phillips
0402278003

\$700,000 - \$770,000

Absolutely irresistible for the avid entertainer, this lovingly updated family home delivers easy modern living with an intuitive layout encompassing three distinct entertaining zones, a large covered alfresco and established gardens great for children. Superbly spacious across a single-level floorplan, the home opens to traditional proportions across a front living room, separate sunroom or dining space and a large rear family room perfect for hosting. Meshing with a partially covered alfresco complete with outdoor kitchen and heat strips, this rear entertaining mecca comes alive all year round to make entertaining easy. Complementing the outdoor facilities is a centrally-placed kitchen with garden window, freestanding gas cooker, dishwasher and breakfast bar, before accommodation finalises the home's interior. Anchoring parents to the front with a master bedroom comprising ensuite and walk-in robe, the three-bedroom two-bathroom layout includes a central family bathroom and large rear laundry. With gas ducted heating, split-system air conditioning and a double garage with additional off-street parking, this sensational family home enjoys proximity to The Gateway Shopping Centre, Langwarrin Park Primary and Woodlands Primary School and Elisabeth Murdoch College, along with public transport and local parks. Should you require any further information, please do not hesitate to contact Terry Wheeler on 0417 397 806 anytime. Please note Photo ID is required for all inspections. All information about the property has been provided to Ray White by third parties. Ray White has not verified the information and does not warrant its accuracy or completeness. Parties should make and rely on their own enquiries in relation to the property.