

115 Keda Circuit, North Richmond, NSW 2754



House For Sale

Friday, 9 February 2024

115 Keda Circuit, North Richmond, NSW 2754

Bedrooms: 4

Bathrooms: 2

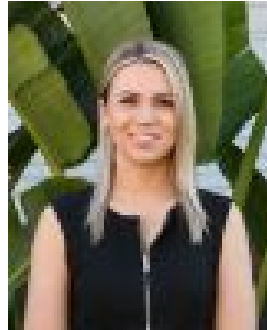
Parkings: 2

Area: 1161 m2

Type: House



Cindy Cash
0245713000



Fallon Quigley
0452159080

Just Listed

Elevated on a 1,161sqm parcel of land, this dual level home is perfect for families looking for extra space! Featuring two balconies, the home offers a beautiful outlook and stunning views from the top grassed terrace. The upper level of the home offers ducted air conditioning and features the main living area as well as the kitchen, three bedrooms, main bathroom and laundry. The lower level of the home offers the second living space with a slow combustion fireplace, master suite with a parent's retreat, walk in wardrobe and ensuite. Externally, there is a sunlit alfresco space with an ornamental grape cover, sandstone terraces with established gardens and staircase to the top of the property with a large grassed area. There is also a concrete driveway, off street parking space perfect for a caravan/boat/trailer and an oversized double garage. Located 1.2kms to the center of North Richmond with multiple shops, childcare services and Richmond North Public School.

Upper level

- Combined kitchen and meals area opening onto the rear alfresco area
- Kitchen with granite benchtops, appliance cupboard, dishwasher and electric cooking appliances
- Living room with sliding glass doors to the front balcony
- Three upper-level bedrooms all with built in wardrobes and ceiling fans, one with a private balcony
- Main bathroom with a separate toilet
- Laundry with external access
- Ducted air conditioning, hardwood flooring in kitchen area, hallway and bedrooms

Lower Level

- Entrance foyer, internal access to double garage
- Large second living space with a slow combustion fireplace
- Master bedroom with a parent's retreat, walk in wardrobe and ensuite

External

- Large alfresco area with an ornamental grape cover
- Sandstone retaining wall with established gardens, deck and staircase to the top of the property
- Large grassed area at the top of the property
- Paved courtyard outside the lower-level entertaining area
- Concrete driveway, off street parking space as well as a double garage

All information about the property has been provided to Ray White by third parties. Ray White has not verified the information and does not warrant its accuracy or completeness. Parties should make and rely on their own enquiries in relation to the property.