

115 Koolama Way, Dudley Park, WA 6210



House For Sale

Thursday, 9 May 2024

115 Koolama Way, Dudley Park, WA 6210

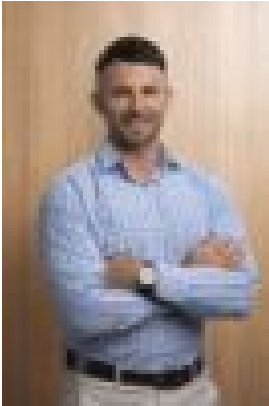
Bedrooms: 4

Bathrooms: 2

Parkings: 2

Area: 448 m²

Type: House



Sean O'Neill
0424606643

\$559,750

A four bedroom home with everything you need! This spacious home has plenty of spaces for the whole family including a large theatre room, IT nook, open plan living area and alfresco. The generous sized master bedroom at the front of the home has both a walk in robe and an ensuite, making it the perfect retreat. The galley kitchen overlooks the spacious living and dining area which opens to the alfresco - perfect for entertaining! Enjoy 900mm Westinghouse appliances stunning tapware, and sleek cabinetry with soft close doors and drawers as standard.*Images depicted on this site are for illustration purposes only. Facades and other images of homes and land estates may include optional upgrades, additional fixtures, finishes and home or estate features that are not included in the base price of the home or land package such as landscaping, feature tiling, decking, furnishing, feature lighting, pools, etc. Land estate pricing and plans are subject to developer guidelines and may vary at any time.