

**116/121-133 Pacific Highway, Hornsby, NSW 2077**



**Sold Apartment**

Tuesday, 15 August 2023

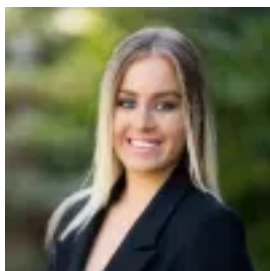
116/121-133 Pacific Highway, Hornsby, NSW 2077

**Bedrooms: 2**

**Bathrooms: 2**

**Parkings: 2**

**Type: Apartment**



Emily Ashman

0294818600

**\$740,000**

With views of the Berowra bush valley, this well appointed apartment offers comfortable and convenient living only 270m walk to the Hornsby town centre. With fresh paint throughout, new carpet and a large terrace balcony this property provides an ideal opportunity for owners looking for comfortable and convenient living or the astute investor seeking a strong investment all within easy walking distance to shops, transport, restaurants, and cinemas. Accommodation Features:- Neutral kitchen with granite bench top, tiled splash back and sufficient storage - Casual meals area with glass doors out to wrap around balcony- Spacious open plan living - Two generously sized bedrooms both with built-in robes and master with an ensuite- Sizable main bathroom - Other features include; air conditioning, internal laundry, double lock car space Disclaimer: All information contained here is gathered from sources we believe reliable. We have no reason to doubt its accuracy, however we cannot guarantee it.