

116 Koolama Way, Dudley Park, WA 6210



House For Sale

Thursday, 4 April 2024

116 Koolama Way, Dudley Park, WA 6210

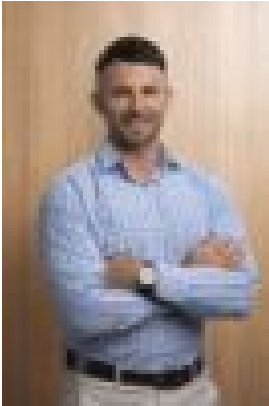
Bedrooms: 4

Bathrooms: 2

Parkings: 2

Area: 450 m2

Type: House



Sean O'Neill
0424606643

\$579,750

The Seattle is a super spacious design that has everything you could need in a home (and more!) With 4 bedrooms, and a study that can be turned into a 5th bedroom, there's napping spots for days! The theatre is at the front of the Seattle, perfect for watching the hottest shows or latest blockbusters. Continue through, and you'll find the heart of the home, the epic open plan living and kitchen area. To make your home the envy of your mates, we've also included a games room and alfresco that both extend from the living areas, score! Parties galore or plenty of room to slide around in your socks. With walk-in-linen, walk-in-pantry and walk-in robe, this home is a total vibe with enough storage for all those clothes you can't part with.*Images depicted on this site are for illustration purposes only. Facades and other images of homes and land estates may include optional upgrades, additional fixtures, finishes and home or estate features that are not included in the base price of the home or land package such as landscaping, feature tiling, decking, furnishing, feature lighting, pools, etc. Land estate pricing and plans are subject to developer guidelines and may vary at any time.