

117 Evell Street, Glenroy, Vic 3046



House For Sale

Thursday, 15 February 2024

117 Evell Street, Glenroy, Vic 3046

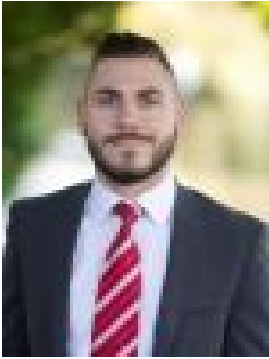
Bedrooms: 4

Bathrooms: 1

Parkings: 5

Area: 677 m2

Type: House



Daniel Imbesi
0393060422

\$870,000 - \$910,000 Auction

The moment you step foot inside this wonderfully maintained brick veneer home you'll be instantly greeted by stunning polished timber floors and a wide formal hallway guiding you through the home. Offering great entertainment space with four bedrooms, two living zones and a dining space off the kitchen, you'll be sure to be impressed with the size on offer. Not to mention we are well located, serviced by two train lines with Glenroy & Gowrie train station nearby, bus stops at your doorstep and many local schools, shops and parklands all in the vicinity. This is one home you simply won't want to miss!

PROPERTY SPECIFICATIONS: - Four generous sized bedrooms boasting polished timber flooring, two of those containing sliding mirrored built in robes- An updated timber kitchen boasting an upright 600mm cooker, built in rangehood, double sink, corner pantry and plenty of cupboard space- Two formal living zones boasting complimented by polished timber flooring, and a feature fireplace to the main lounge- Dining area adjoining the kitchen offering flexible living space- Centrally located bathroom offering shower, bath, single vanity, built in cupboards and a separate toilet and vanity- Full size laundry with a double trough, built in cupboard and external access to the rear yard- Outside, a wonderfully large rear yard boasting mixed grassed and concreted zones surrounded by established fruit trees- Plenty of off-street parking with gated access to a two-car carport and a steel garage, and an additional 2+ parking spots in the driveway- Extra features include ducted heating, evaporative cooling, window shutters and security doors

LOCATION BENEFITS:- Located within a short distance to local shops, parks and schools- Easy access to Glenroy & Gowrie train stations- 536 Bus Stops on Evell Street taking you through to Glenroy & Gowrie - 1.2km's (approx.) to West St & North St shopping strips- 450m (approx.) to Belle Vue Park Primary School- Glenroy is located 12.5km's North of the CBD with terrific City Link, ring road and airport access