

1175/57 Skyring Terrace, Newstead, Qld 4006



Sold Apartment

Thursday, 12 October 2023

1175/57 Skyring Terrace, Newstead, Qld 4006

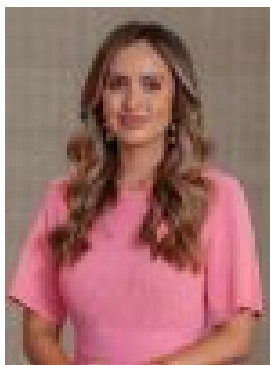
Bedrooms: 3

Bathrooms: 2

Parkings: 2

Area: 145 m2

Type: Apartment



Kathleen Holland
0422531221



Eva Sutjipto
0411626192

\$2,400,000

This is a rare opportunity to join Newstead's most exclusive new address.... A sprawling three-bedroom residence with panoramic river views on Level 17 of Mirvac's Quay Waterfront Newstead is being offered for sale. Quay is now under construction and expected to complete late-2024. Quay Residence 1175 offers an expansive entertainer's kitchen, open-plan living and dining area, study nook, dedicated laundry room and three generous bedrooms which unfold onto a spectacular east-facing 26sqm balcony. Key inclusions:- Miele appliances including two 600mm ovens and 900mm wide gas cooktop- Feature rangehood - Brass tapware and fittings to kitchen and bathrooms- 40mm reconstituted stone kitchen island and 20mm elsewhere- Feature porcelain Carrara to kitchen island fascia and splashback - Integrated double door fridge- Timber look laminate joinery to kitchen and bathrooms- Mirrored shaving cabinets with LED lighting - Floor to ceiling tiling to bathrooms- Engineered oak timber flooring to kitchen, living and dining- Luxurious wool blend carpet to bedrooms- Ducted air conditioning throughout- Ceiling fans to the living area and bedrooms- Custom in-built joinery to study nook - Blinds to external glazing- Gas, power and water to balcony- Provision of power for electric vehicle charging to one carpark Quay Waterfront Newstead by Mirvac is the next chapter of riverside living in Brisbane. Set amongst 5.5 ha of parklands, this biophilic tower weaves garden-green freshness up and around its apartments. From the rooftop pool and cocktail garden down to the ground floor wellness centre, this is a place that prioritises a rich and connected inner life. The building community also benefits from a private residents' lounge, wine room and dining area which can be reserved for entertaining and special events. Centred by the park but connected to the best of Brisbane's shopping and social scenes, Quay Waterfront Newstead is approximately 2km from the CBD. Surrounded by Teneriffe, Fortitude Valley and the river, life here offers the best of urban living balanced with the tranquillity of the waterfront. To find out more please contact Mirvac's Waterfront Newstead Sales Team, Kathleen Holland on 0422 531 221 or Eva Sutjipto on 0411 626 192 or visit our Waterfront Newstead Sales Suite located at 13 Cunningham Street, Newstead. Disclaimer: Artist's impression. Architecture, landscaping, furnishings and services are indicative only and subject to change. Views depicted are indicative only. Views and view corridors may be affected by other developments and planning issues outside of the control of Mirvac. The location, extent, height and design of the balcony planters is subject to change. Image shows Type 5 Quay Residence on Level 18. Kitchen and bathroom renders are of Type 2 Quay Residence.