

118 Paskas Drive, Fraser Rise, Vic 3336

Sold House

Tuesday, 21 November 2023

118 Paskas Drive, Fraser Rise, Vic 3336

Bedrooms: 4

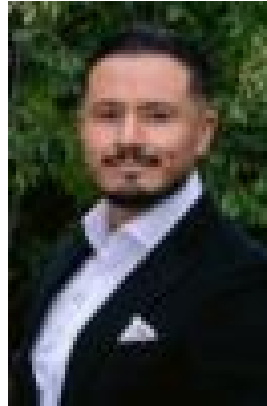
Bathrooms: 2

Parkings: 2

Type: House



Ray Mirza
0409557788



Anthony Orellana
0468629408

\$685,000

Perfectly positioned within the sought-after Heathfield Estate, on offer is a near-new, beautifully appointed 4-bedroom family home, providing an unparalleled lifestyle of comfort and convenience in a thriving community, benefitting from surrounding, long-established suburbs. With sublime street presence, all landscaping works have been completed to include a low-maintenance, hardy garden that will grow into a lush oasis. Stepping inside, the modern floorplan set atop beautiful timber flooring, comprises a central spine flowing through the home, culminating in the open-plan living and dining zone that fosters a sense of unity and togetherness on all occasions, whether you're entertaining or enjoying a quiet night at home. Effortlessly flowing outdoors, a fully fenced rear yard awaits, perfect for kids and pets to run and play. Separately located, a secondary living space offers endless possibilities for its use, perfect for a formal sitting room, home theatre, kids' playroom, or the ultimate study. The premium entertainers' kitchen, dressed in elegant tones of beech and white for a scandi look, showcases quality stainless steel appliances, including 900mm gas cooktop, under bench oven and dishwasher, complemented by a deep double sink, stone bench tops, spacious pantry, and an abundance of storage throughout. Completing the picture, the feature breakfast bar creates an informal eating area or can be utilised as a centrepiece to a buffet-style occasion. With four spacious bedrooms each set atop plush carpet, rest and rejuvenation is paramount. The palatial master suite enjoys a walk-in robe, private ensuite and peaceful outlook to the front garden, while three additional bedrooms are each fitted with a mirrored built-in robe. Centrally located, the sparkling family bathroom is perfect for getting ready for the day and unwinding at the end of the week. Offering a choice of deep bathtub or large corner shower, the elegant charcoal tiling contrasts against pure white walls and beech cabinetry for a luxe, spa-inspired feel. For convenience, the toilet has been separately located, adjacent to the bathroom. Other features include double lock-up garage with internal and rear-yard access, ducted heating and evaporative cooling for year-round comfort, large laundry, water tank, and clothes line. Situated in a fast-growing community, enjoy living within walking distance to City Vista Shopping Centre for your essentials and an excellent selection of dining options, an abundance of parks, playgrounds and walking tracks, Springside West Secondary College, Fraser Rise Children's & Community Centre, and bus route 461 for connections to Watergardens. Located only a short drive away, you'll find a huge range of educational institutions, Taylors Hill Village, and Watergardens Shopping Centre and Railway Station. When you need to go further, the Western and Calder Freeways are both nearby, offering connections across Melbourne to the city, airport, and beyond.