

119/38 Skyring Terrace, Teneriffe, Qld 4005

GRACZYK THOMPSON

Apartment For Rent

Tuesday, 30 April 2024

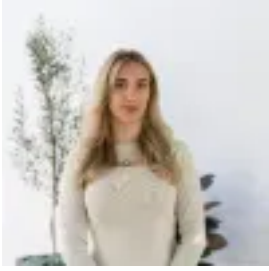
119/38 Skyring Terrace, Teneriffe, Qld 4005

Bedrooms: 1

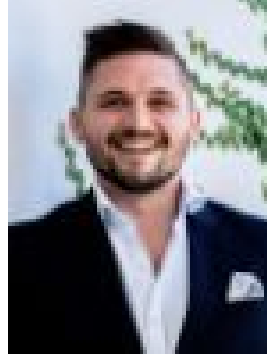
Bathrooms: 1

Parkings: 1

Type: Apartment



Ashleigh Leavitt
0737067248



Blair Mutch
0737067248

\$600 per week

An apartment that flows with no dividing walls. Integrated appliances set in galley style kitchen and expansive windows that open to a private Juliet balcony. All this together with an address of enviable convenience opposite the river in central Teneriffe. This is a rare and special opportunity not to be missed. Apartment Features:- Spacious open plan kitchen, living and dining- Modern kitchen with; stainless steel appliances, gas cooktop, stone bench tops, dishwasher and ample storage- Large bedroom with built in robe, ceiling fan and air-conditioning- High ceilings- NBN connected- Secure basement carpark with internal lift access- Pets considered under 7kg (Body Corporate and owner approval) Building Features:- Large fully equipped in-house gym- Sauna room- Hot spa- Secure undercover parking with remote access- Swipe security access- Intercom Proximity and Transport:- Walking distance to absolutely everything including but not limited to Gasworks, James St, Riverwalk, Calile Hotel, Emporium, New Farm Park! - On your doorstep you have access to buses in any direction including the City Glider plus Teneriffe ferry stop - Only 3km to Brisbane CBD Please contact our leasing agent Ashleigh on 0468 441 550 or ashleigh@gtpartners.com.au to book an inspection of this property. Please ensure you register for any inspection you are wanting to attend so that should we need to cancel the inspection for any reason, we are able to notify you of this change.*Every care and due diligence has been taken in the preparation of this listing. The agency and owner assume no responsibility for the accuracy of the content, and encourage all prospective tenants to conduct their own research.