

**11B Adderton Road, Telopea, NSW 2117**

**Raine&Horne.**

**Duplex/Semi-detached For Sale**

Friday, 26 April 2024

11B Adderton Road, Telopea, NSW 2117

**Bedrooms: 4**

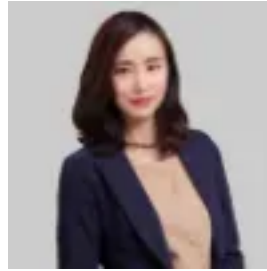
**Bathrooms: 2**

**Parkings: 1**

**Type: Duplex/Semi-detached**



Amanda (Yuan) Yuan  
0298712788



Jenny (Qi) Zhang  
0298712788

## Auction

Located in the heart of Telopea, this family home ensures a quality lifestyle of charm and character throughout. Surrounding by parks, schools and future light rails ensuring a life of absolute convenience. It is your chance to enjoy low-maintenance living without sacrificing comfort, space or style. Key Features:- Sun-drenched open plan living & dining area flowing seamlessly onto the outdoor entertaining area;- Gas kitchen with stone bench top, and stainless steel appliances;- Four generous sized bedrooms, master with ensuite and walk in wardrobe;- A covered patio with timber floor and an expansive levelled backyard, perfect for hosting guests; - Split air conditioning in two of bedrooms and one in downstairs, a third toilet, and internal laundry; - Lock up single car garage plus car space. Transport, Schools and facilities:- Catchment of Dundas Public School and Cumberland High School;- Walk to bus stops, Sturt Park and popular local shops; - Approximately 1km to Telopea Light Rail Station;- Approximately 3.6km to Carlingford Shopping Centre;- Within easy reach of Eastwood and the Parramatta CBD. DISCLAIMER: Whilst every effort has been made to ensure the accuracy of the information contained about this property, it does not constitute any warranty or representation by the vendor or agent. All information contained herein is gathered from sources we consider to be reliable.