

**1&2/10 Eversleigh Road, Scarborough, Qld 4020**



**Sold House**

Sunday, 31 March 2024

1&2/10 Eversleigh Road, Scarborough, Qld 4020

**Bedrooms: 4**

**Bathrooms: 2**

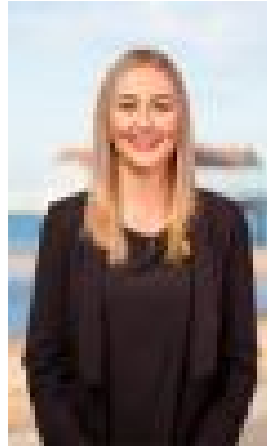
**Parkings: 2**

**Area: 405 m2**

**Type: House**



Miguela Dempsey  
0451598100



Paige Forster  
0449650457

**\$767,000**

Situated in the sought-after streets of Scarborough, only 200m from the water, this dual income property is a great opportunity you don't want to miss. This classic block with two flats is perfect for keen investors or a fantastic development opportunity! It is moments to the waterfront, close to Scarborough waterfront, leafy parks, playgrounds and a wide array of lifestyle and health amenities, shops, cafes, restaurants and public transport. Two flats located side by side, both with 2 bedrooms, 1 bath, private backyard and single lock up garage. This is a great asset with a solid \$37,000+ yield each year and no body corporate fees! Affordable and low-maintenance rental properties are always in high demand and vacancy rates are at a historic low for this area. Located in a quiet and friendly neighborhood, this property offers a peaceful retreat from the hustle and bustle of city life. Enjoy the convenience of being close to shops, schools, and parks, while still being able to relax in your own private oasis. It offers easy access to Redcliffe Hospital, and is a short drive to Westfield North Lakes, IKEA and Costco. There is easy access to local buses, Kippa-Ring train station, the Hornibrook Bridge, Brisbane Domestic and International Airports, the Gateway Motorway, Bruce Highway and Brisbane City. It's also moments from Southern Cross Catholic College, Grace Lutheran Primary and Secondary College, Humpybong State School and Clontarf Beach State High School and various childcare centres. Don't miss your chance and enquire today!