

12/132 Clayton Street, Bellevue, WA 6056



Sold Unit

Monday, 14 August 2023

12/132 Clayton Street, Bellevue, WA 6056

Bedrooms: 3

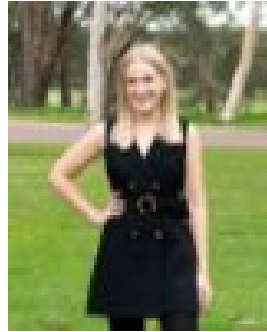
Bathrooms: 2

Parkings: 2

Type: Unit



Richard Lowenhoff
0892745555



Laura Savage
0437384911

\$342,000

With every box ticked for the downsizer, professional, investor or first home buyer, this well appointed and generously proportioned home is in a fantastic location offering public transport at your doorstep and all of the benefits of what the high growth Midland region area has to offer. This very well presented and cared for brick and tile example is set within the maintained grounds of a private and secure complex offering all the benefits you would expect. The open plan layout offers 3 bedrooms and 2 bathrooms, with the main bedroom offering a great size with built-in robe and ensuite. Moving to Bedrooms 2 and 3, you find good size built in robes, well kept carpets, ceiling fans and window treatments that compliment the generous interior. The main tiled living area focuses around a galley style kitchen, along with a spacious living/dining area, leading you to a good-sized, well appointed laundry with ample storage. When stepping outside, a paved courtyard awaits your personal touches (and maybe a patio for those summer evening bbq's) and is complimented by a double carport and lockable storage area that complete this homes features. FEATURES INCLUDE: -Gated secure complex-189m2 block-104m2 living area-Low Strata Fees - approx \$277 per quarter-Brick & tile construction-Galley kitchen -Spacious tiled living/dining area-Large master bedroom with wardrobes and ensuite-2 good sized additional bedrooms with wardrobes-Good sized bathroom-Separate laundry-Air Con in main living area-Alfresco-Double car port-Storeroom-Currently a fixed lease in place at \$450 per week Strata Fees: \$1,108 pa Midland Gate 3.4km Hospital 2.9km Midland Train Station 4.0km For more information or to secure your viewing call Richard Lowenhoff or Laura Savage from Ray White Midland and Hills.