

12-24 Eversley Ct, Bromelton, Qld 4285

PLATINUM EDGE

Sold House

Saturday, 17 February 2024

12-24 Eversley Ct, Bromelton, Qld 4285

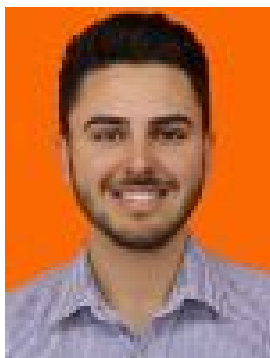
Bedrooms: 2

Bathrooms: 1

Parkings: 2

Area: 4 m2

Type: House



Ben Eggenhuizen
0422041878



Peter Eggenhuizen
0413744450

\$760,000

This is the perfect blank canvas for anyone wanting useable, flood free acreage complete with a 2 Bedroom, 1 Bathroom cottage, ideal to live in while you build your dream home, rent out or utilize as a managers/caretakers cottage. You won't find a better opportunity this close to town. The property does need some TLC however, the current layout and utilization of space is perfect for horses, cattle and other larger animals. Imagine yourself building your dream family home with a large shed, swimming pool, horse arena and more! Property Features:- 2 Bedroom, 1 Bathroom Cottage- 2x 15,000L Water tanks- 6x9m Shed fits 2 cars plus storage- Fully fenced boundary with 5 large internal paddocks- Water Bore equipped with pump- Large Dam- 2 Bay horse stables in need of some TLC It's not often you get flat, useable and flood free land only 5 minutes from the Beaudesert Township. It's The Perfect Location:- School bus pick up at front door- 3min to Aquis Beaudesert (Beaudesert Race Club)- 5 mins to Beaudesert Township- 16 min to Jimboomba- 1 Hour to Gold Coast and Brisbane- 1 Hour to Gold Coast Turf Club, Doomben Racecourse & Eagle Farm This property is a must inspect for anyone whether downsizing, upsizing, getting into the market or expanding the property portfolio. Call Ben 0422 041 878 to arrange an inspection. Property Code: 761